

DOCUMENT RESUME

ED 295 710

JC 880 278

TITLE Update of Community College Transfer Student Statistics, Fall 1987. University of California, the California State University, and California's Independent Colleges and Universities. Commission Report 88-15.

INSTITUTION California State Postsecondary Education Commission, Sacramento.

PUB DATE Mar 88

NOTE 59p.; For the fall 1986 report, see ED 285 632.

AVAILABLE FROM Publications Office, California Postsecondary Education Commission, 1020 Twelfth St., Third Floor, Sacramento, CA 95815-3985.

PUB TYPE Reports - Research/Technical (143) -- Statistical Data (110)

EDRS PRICE MF01/PC03 Plus Postage.

DESCRIPTORS Academic Achievement; Age; Asian Americans; Black Students; *College Transfer Students; *Community Colleges; Comparative Analysis; *Enrollment Trends; *Ethnic Groups; Females; Graduation; Higher Education; Majors (Students); Males; Mexican Americans; State Colleges; State Surveys; State Universities; Trend Analysis; *Two Year College Students

IDENTIFIERS *California

ABSTRACT

Since 1978, annual studies have been conducted of the flow of transfer students from the California community colleges to the University of California and the California State University (CSU). The studies have focused on trends in the numbers of transfers and the ethnicity, majors, and age of transfer students. Findings from the study of fall 1987 transfers, which included fall-term data from California's regionally accredited independent colleges and universities, indicated that: (1) 5,465 students transferred from the community colleges to the UC system, a 12.5% increase over the previous year and the largest total number of transfers to the UC since 1979; (2) transfers to the CSU system increased 1.8% over fall 1986 to reach a total of 28,252 students; (3) transfers to private colleges and universities grew by 26% over the prior year, representing a total of 8,086 students; (4) 22% of the baccalaureate degrees awarded by the UC in 1985-86 and 50% of those awarded by the CSU went to community college transfer students; (5) 51% of the transfers to UC were men, while 52% of the transfers to CSU were women; (6) Asian students continued to be the largest ethnic group transferring to UC, comprising 14% of the transfers, while Hispanic students, at 11.2%, were the largest ethnic minority transferring to CSU. (MJB)

 * Reproductions supplied by EDRS are the best that can be made *
 * from the original document. *

ED 295710

UPDATE OF COMMUNITY COLLEGE TRANSFER STUDENT STATISTICS FALL 1987

University of California,
The California State University,
and California's Independent
Colleges and Universities

"PERMISSION TO REPRODUCE THIS
MATERIAL HAS BEEN GRANTED BY

E. Testa

TO THE EDUCATIONAL RESOURCES
INFORMATION CENTER (ERIC)"

U.S. DEPARTMENT OF EDUCATION
Office of Educational Research and Improvement
EDUCATIONAL RESOURCES INFORMATION
CENTER (ERIC)

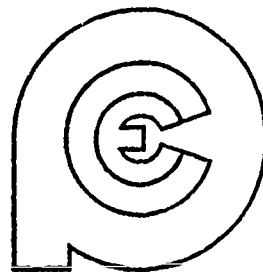
This document has been reproduced as
received from the person or organization
originating it.

Minor changes have been made to improve
reproduction quality.

• Points of view or opinions stated in this docu-
ment do not necessarily represent official
OERI position or policy.

POSTSECONDARY

CALIFORNIA



EDUCATION

COMMISSION

CALIFORNIA POSTSECONDARY EDUCATION COMMISSION
Third Floor • 1020 Twelfth Street • Sacramento, California 95814-3985

BEST COPY AVAILABLE

822 880 278

SUMMARY

This tenth report in the Commission's series of annual studies of California Community College students who transfer to four-year colleges or universities contains positive indications that the transfer function of the Community Colleges -- an essential element in the State's Master Plan for Higher Education -- has improved for students wanting to transfer to the University of California in particular.

It indicates that a total of 5,465 students transferred from California's 106 Community Colleges to the University in the fall of 1987 -- an increase of 12.5 percent over the previous year, and the largest total number of transfers to the University since 1979. The largest increases among the University's campuses occurred at Berkeley, Davis and Los Angeles.

Transfers to the California State University increased 1.8 percent over Fall 1986, for a total of 28,252 students. The largest increases at State University campuses occurred at San Bernadino (23 percent), Humboldt (21 percent), San Diego (8 percent), and Long Beach (4 percent), while four campuses enrolled fewer transfer students in Fall 1987 than Fall 1986 -- Fullerton, Los Angeles, Northridge, and San Francisco.

A large increase occurred among private colleges and universities, where transfers grew by 26 percent over the prior year, up to 8,086. Many of these transfers were to one multi-campus independent institution.

The report indicates that 22 percent of the baccalaureate degrees which the University awards and 50 percent of those that the State University awards go to students who have transferred from Community Colleges. The report also notes that the overall increase in transfer students is particularly encouraging in light of recent Community College freshman enrollments, which have remained low during the 1980's, as well as the increasing number of high school graduates who enroll directly in the University and State University as freshmen.

Additional copies of this report and further information about it may be obtained from the Library of the Commission at (916)322-8031; Third Floor, 1020 Twelfth Street, Sacramento, California 95814-3985.



COMMISSION REPORT 88-15 PUBLISHED MARCH 1988

This report, like other publications of the California Postsecondary Education Commission, is not copyrighted. It may be reproduced in the public interest, but proper attribution to Report 88-15 of the California Postsecondary Education Commission is requested.

Contents

1. Highlights of the Findings	1
Trends in Numbers of Transfer Students	1
Full-Year Transfer Statistics	1
Sex of Transfer Students	1
Ethnicity of Transfer Students	1
Baccalaureate Degrees Awarded	1
2. Trends in Numbers of Community College Transfer Students	3
Context for the Commission's Reports on Transfer	3
Background and Methodology	3
Overall Trends	4
University of California Statistics	4
California State University Statistics	10
Independent College and University Transfer Statistics	16
3. Sex and Ethnicity of Transfer Students	19
Sex	19
Ethnicity	19
4. Performance and Graduation of Transfer Students	23
Academic Performance	
Percent of Degrees Awarded	23
Appendix A: Flow of Transfer Students from California Community College Districts and Colleges to the University of California, the California State University, and Regionally Accredited Independent Colleges and Universities, Fall Term and Full Year Statistics	29
Appendix B: Ethnic Distribution of Community College Transfer Students to the University of California and the California State University, Fall 1986 and Fall 1987	41
Appendix C: University of California Performance Reports for Community College Students Who Transferred Fall 1986	53
References	55

Displays

1. Number of Community College Students Who Transferred to the University of California, the California State University, and Regionally Accredited Independent Institutions, Together with Number of First-Time Freshmen in the University, the State University, and the Community Colleges from California High Schools, 1965 Through 1987 5
2. Number of Community College Students Who Transferred to the University of California in Fall 1965 Through Fall 1987 6
3. Number of Community College Students Who Transferred to Each General Campus of the University of California, Fall 1979 to Fall 1987 7
4. Number of Community College Students Who Transferred to Each General Campus of the University of California During 1986-87 8
5. Number of Community College Transfers to Each California State University Campus, Fall 1979 - Fall 1987 11
6. Number of Community College Students Who Transferred to the California State University in Fall Term and Remainder of the Year, 1969 Through 1986 12
7. Full-Year Numbers of Community College Transfer Students to the California State University, 1979-80 Through 1986-87 13
8. Number of Community College Students Who Transferred to Independent California Colleges and Universities, Fall 1986 and Fall 1987 17
9. Ethnic Distribution of Community College Transfer Students to the University of California and the California State University, Fall 1980 Through Fall 1987, in Percents 20
10. Sample University of California Summary Performance Report 24
11. Baccalaureate Degrees Awarded by the University of California by Type of Student and Discipline, 1982-83 and 1985-86 25
12. Baccalaureate Degrees Awarded by the California State University by Type of Student and Discipline, 1982-83 and 1985-86 26

Trends in numbers of transfer students

The number of Community College students who transferred to four-year colleges and universities in California increased in the Fall 1987 term from Fall 1986.

- The increase for the University of California was 12.5 percent or 607 students to a total of 5,465 -- the largest number since Fall 1979, with the largest percentage increases at the Berkeley, Davis, and Los Angeles campuses.
- The increase for the California State University was 1.8 percent or 491 students to a total of 28,252 -- fewer than the number who transferred in Fall 1985 or at any time as far back as 1970 but an increase over Fall 1986. Decreases at some State University campuses appear to reflect increases at some University of California campuses.
- The increase for 48 independent colleges and universities was about 1,675 students -- to a total of 8,086, two-thirds of whom enrolled at one multi-campus institution (National University) that accounted for most of the increase. Data from institutions that reported their transfer enrollment for 1986 but not yet for 1987 are expected to increase the present total by several hundred students.

Full-year transfer statistics

New transfer students in the Fall 1986 term accounted for 72 percent of the total 6,754 who transferred to the University during the full 1986-87 year. This appears to be an increase over 1985-86 -- the first year for which the University provided full-year information.

In the State University, 64 percent of the 43,666 students who transferred in 1986-87 did so in the fall term. The total for that year was the smallest of any during the 18-year period for which information is available.

Sex of transfer students

Men were a majority of 51 percent among Community College students who transferred to the University in Fall 1987, while women were a majority of 52 percent among transfer students to the State University.

Both University and State University campuses differed in their ratio of men to women transfer students, with the percentage of men ranging from 46 to 57 percent among the eight general campuses of the University, and from 38 to 63 percent among the 19 State University campuses.

Ethnicity of transfer students

All ethnic minority groups made at least small gains of less than 1 percentage point between Fall 1986 and Fall 1987 except Black students transferring to the University, whose percentage decreased slightly, and American Indian students transferring to the State University, whose percentage remained the same.

Asian students continued to be the largest ethnic minority group transferring to the University, accounting for 14.0 percent of all its Community College transfer students of known ethnicity for Fall 1987. The next largest minority groups were Hispanic transfer students at 10.4 percent, and Black transfer students at 3.6 percent.

Hispanic students were the largest ethnic minority group transferring to the State University in Fall 1987, at 11.2 percent of all those with known ethnicity. Asian students constituted 10.6 percent of those students, and Black students, 6.7 percent.

Baccalaureate degrees awarded

The percentage of baccalaureate degrees that are

awarded to Community College transfer students is one good measure of their performance in California's public universities.

- The University of California awarded 22 percent of its baccalaureate degrees in 1985-86 to students who had transferred from a Community College, compared with 50 percent awarded to native students who had begun their college work on the campus which awarded them their degree, and 28 percent awarded to transfer students from other than the California Community Colleges.
- The California State University awarded 51 percent of its baccalaureate degrees in 1985-86 to students who had transferred from a Community College, compared with 22 percent awarded to na-

tive students and 27 percent to other transfer students, including those who transferred from other State University campuses.

- In engineering -- the third largest discipline in which the University awarded baccalaureate degrees, after social sciences and life sciences -- 24 percent were awarded to Community College transfer students, 59 percent to native students, and 17 percent to other transfer students. In the State University, where engineering ranked second after business and management, Community College transfer students were awarded 47 percent of the baccalaureate degrees; native students, 25 percent; and other transfer students, 28 percent.

2

Trends in Numbers of Community College Transfer Students

Context for the Commission's reports on transfer

The origins of California's Community Colleges may be traced to locally established, financed, and governed junior colleges that were a part of the public school system, with the primary function of providing two years of college-level work beyond high school to graduates who were unable to go away to college as freshmen but who might do so as juniors. In 1960, the Master Plan for Higher Education in California elevated these junior colleges to the status of full partners in the State's tripartite system of public higher education and emphasized as strongly as possible the importance of their transfer function to the success of this system in terms of access, quality, and low cost to students and to the State.

The transfer function might be said to have reached its peak by the mid-1970s when numbers of students who transferred to the University of California and the California State University were at their highest level, decreasing thereafter until recently. Two major reasons for the decline were changes in the characteristics of Community College students -- older, more ethnic minority representation, needing more remedial instruction, and with short-term vocational or non-academic interests -- and a shift in priority among the colleges' functions that resulted from these changes in student population.

The Board of Governors of the California Community Colleges and the Commission both contributed to the resurgence of interest in the transfer function in the years just prior to the establishment in 1984 of the Commission for the Review of the Master Plan for Higher Education that has once again emphasized the critical importance of the transfer function to the success of California's interdependent system of public higher education and made recommendations that should strengthen it.

The Postsecondary Education Commission's long-standing interest in transfer and articulation may

be illustrated by the three types of reports it has published periodically -- (1) statistical reports such as this on the flow and performance of transfer students, (2) descriptions of programs and practices, and (3) policy reports with recommendations to the Governor, the Legislature, and the various segments of education. The latter includes *Reaffirming California's Commitment to Transfer* -- the report of an ad hoc committee of Commission members that its chairperson appointed in 1984 to study and make recommendations to strengthen the transfer function. A list of these reports appears in the references at the end of this document.

Background and methodology

This is the eleventh annual report of California Community College transfer statistics which the Commission has published since 1978 as a service to counselors, enrollment planners, transfer program directors, and evaluators. It is more complete than previous reports in that it includes fall-term data from California's regionally accredited independent colleges and universities and both fall and full-year information for the University of California as well as the California State University.

The main source of data for the University and the State University is the Fall 1987 student enrollment tapes that the central administration of each segment submitted to the Commission early in 1988. Commission staff obtained information from the independent sector through a survey of the sources of their first-time freshmen and Community College transfer students that it conducted during Fall 1987.

Appendix A has been expanded from previous reports to include for each Community College full-year data on transfer students between 1981-82 and 1986-87 to the State University and for 1986-87 to the University -- the first year for which the University has been able to provide complete and reliable

full-year data, together with Fall 1982 through 1987 term data for independent institutions -- which vary from year to year in both the number able to report such information and its accuracy, thus making year-to-year comparisons somewhat tenuous.

The Commission continues to use fall-term figures for its analysis of changes from year to year for two primary reasons:

- First, full-year data are not available until more than a year after fall-term data -- one result of which would be to postpone publication of this annual report beyond the time when fall-term information would be useful to those planning and evaluating transfer programs.
- Second and more obvious, the unavailability of full-year University data until now limited the Commission's capacity to analyze changes and trends.

Unlike the Commission's analysis of college-going rates, which attempts to estimate the percentages of current-year high school graduates who go directly to college, this report includes all students newly enrolled in the University and the State University with advanced standing who attended a Community College -- without regard to age, recency of Community College enrollment, or eligibility for admission to the University or the State University as a freshman when they graduated from high school. In regard to age, 77 percent of the University's Fall 1984 transfer students were under the age of 25 at the time of transfer, as were 70 percent of the State University's transfer students. As might be expected, the age distribution of the transfer students is skewed and only 10 percent of the University's transfer students that fall were 30 years or older, as were only 15 percent of the State University's students. Larger percentages of women than men were in the "under 20" and "over 30" age groups, and smaller percentages of Black and Hispanic students were under 25 than in the other major ethnic groups.

Overall trends

Numbers of Community College students who transferred to the University and the State University in Fall 1965 through Fall 1987 are shown in Display 1 on page 5, together with (1) full-year statistics for

the State University beginning in 1969-70 and the University beginning in 1985-86, (2) fall-term statistics for independent colleges and universities for Fall 1986 and 1987, and (3) numbers of recent high school graduates enrolling as first-time freshmen in the fall term in the three public segments during the last 13 to 22 years.

For all three segments, the number of Community College students who transferred in Fall 1987 was larger than a year earlier and for the University was the largest since 1979. At the State University, the increase was little more than a reversal of the decline which began in Fall 1981 and is the second smallest since 1970. The number who transferred to independent colleges and universities also appears to have increased for Fall 1987, but better reporting may account for part of the increase, together with growing upper-division enrollments at National University. These increases are encouraging when viewed in the context of Community College freshman enrollments, which have remained low during the mid-1980s, and the increasing numbers of recent high school graduates who enroll directly in the University and the State University as freshmen.

Some Community College transfer students enroll in the University and the State University for the first time in the winter and spring terms -- about one-fourth of the transfer students to the University and slightly more than one-third of the transfer students to the State University. The latter percentage has remained quite stable over time but varies among both State University and Community College campuses. No historical information is available for the University with which to validate the impression that the numbers of transfer students who enter in the winter and spring terms has been increasing as competition for admission at both the freshman and advanced standing levels has increased for the fall term.

University of California statistics

Fall-term statistics

The number of Community College transfer students who entered the University with advanced standing increased by 12.5 percent or 607 students between Fall 1986 and Fall 1987 -- to 5,465, which was the

DISPLAY 1 *Number of Community College Students Who Transferred to the University of California, the California State University, and Regionally Accredited Independent Institutions, Together with Number of First-Time Freshmen in the University, the State University, and the Community Colleges from California High Schools, 1965 Through 1987*

Year	Community College Transfer Students					First-Time Freshmen		
	Fall Term		Independent	Full Year		Fall Term Only		
	UC	CSU		UC	CSU	UC	CSU	CCC
1965	2,948	14,603		--	--	14,023	--	--
1966	3,761	19,295		--	12,341	15,574	--	--
1967	3,702	22,059		--	13,072	16,062	--	--
1968	3,785	26,596		--	11,665	18,844	--	--
1969	4,458	28,207		43,963	12,066	17,539	--	--
1970	5,166	29,059		49,245	13,233	18,984	--	--
1971	6,154	32,546		52,989	13,637	19,306	--	--
1972	7,165	34,619		53,820	14,358	22,094	--	--
1973	8,193	33,089		51,335	15,011	22,210	--	--
1974	7,813	32,646		51,144	14,915	22,886	119,652	--
1975	8,002	35,537		52,917	15,460	23,239	126,688	--
1976	7,123	32,653		51,230	14,935	23,498	120,702	--
1977	6,392	34,001		51,159	14,820	23,867	123,561	--
1978	6,193	31,609		47,430	15,850	24,668	117,510	--
1979	5,649	30,428		46,326	16,534	25,703	117,269	--
1980	5,428	30,490		46,649	16,340	25,470	116,518	--
1981	4,778	30,026		45,283	16,580	23,500	109,556	--
1982	5,137	29,824		45,400	16,897	24,016	113,815	--
1983	5,305	30,274		45,726	18,323	23,250	99,359	--
1984	5,257	30,134		45,476	19,202	22,959	93,521	--
1985	4,937	29,682		6,574	45,469	19,388	22,959	82,877
1986	4,858	27,761	6,512	6,754	43,666	19,616	25,525	90,348
1987	5,465	28,252	8,086	--	--	--	--	--

Source: California Postsecondary Education Commission.

largest number since 1979. Although smaller than the number who transferred each year between 1971 and 1979, it represents a substantial increase over recent years at a time when the number of high school graduates and the percentage of such graduates enrolling in Community Colleges are both low.

Display 2 on the next page depicts the trend in the University's fall-term transfer enrollments from 1965 to 1987.

Display 3 on page 7 shows the number of new Community College transfer students at each of the eight general University campuses for Fall 1979 through Fall 1987, and Appendix A shows the number who

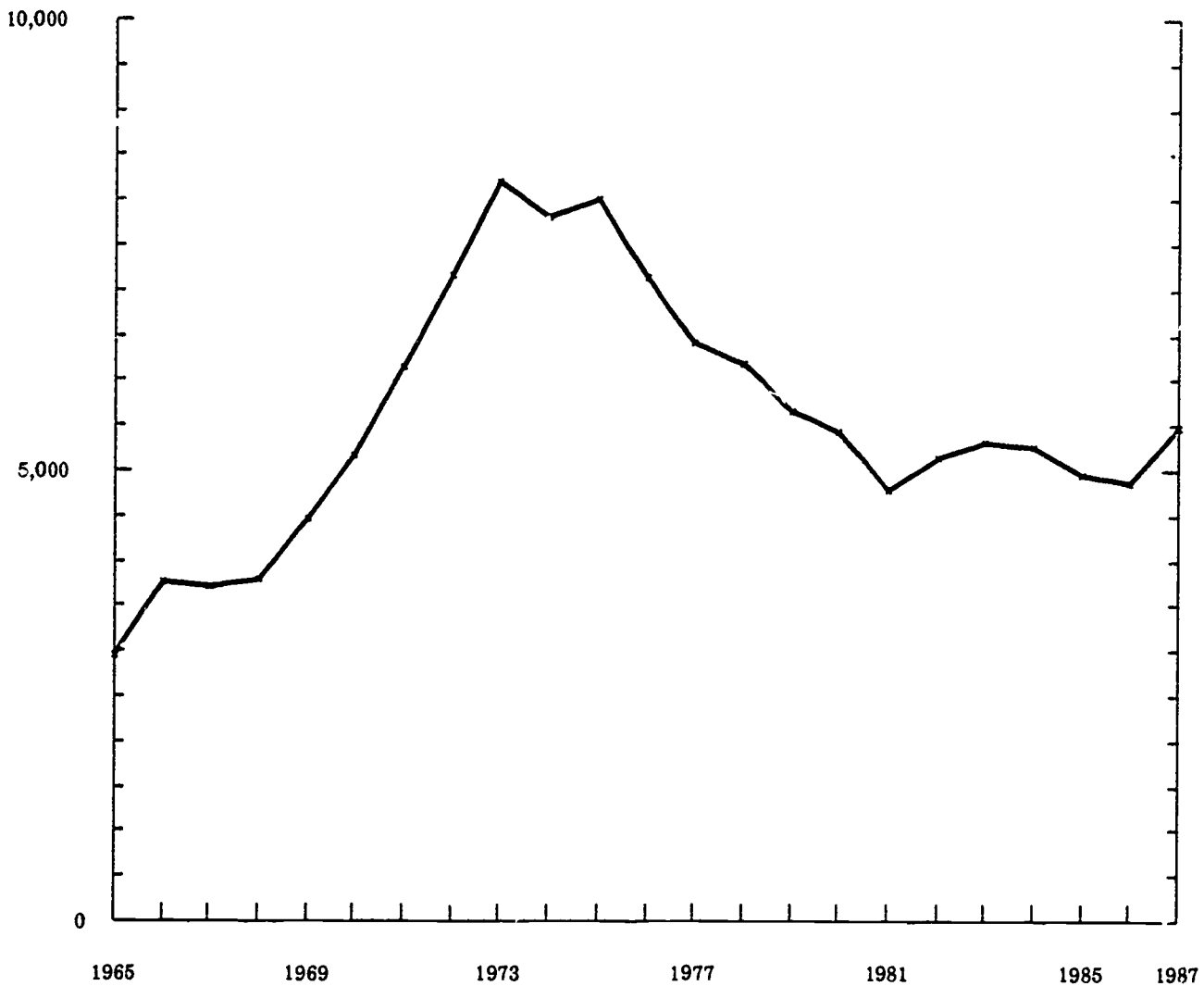
transferred from each Community College in Fall 1981 through Fall 1987.

Full-year statistics

Display 4 on page 8 shows the number of Community College students who transferred during all terms in 1986-87 to each of the University's eight general campuses. It does not include numbers for previous years because they were unavailable before 1985-86 and unreliable for some campuses that year.

The University's Fall 1986 transfer enrollment constituted 72 percent of its 1986-87 full-year figure.

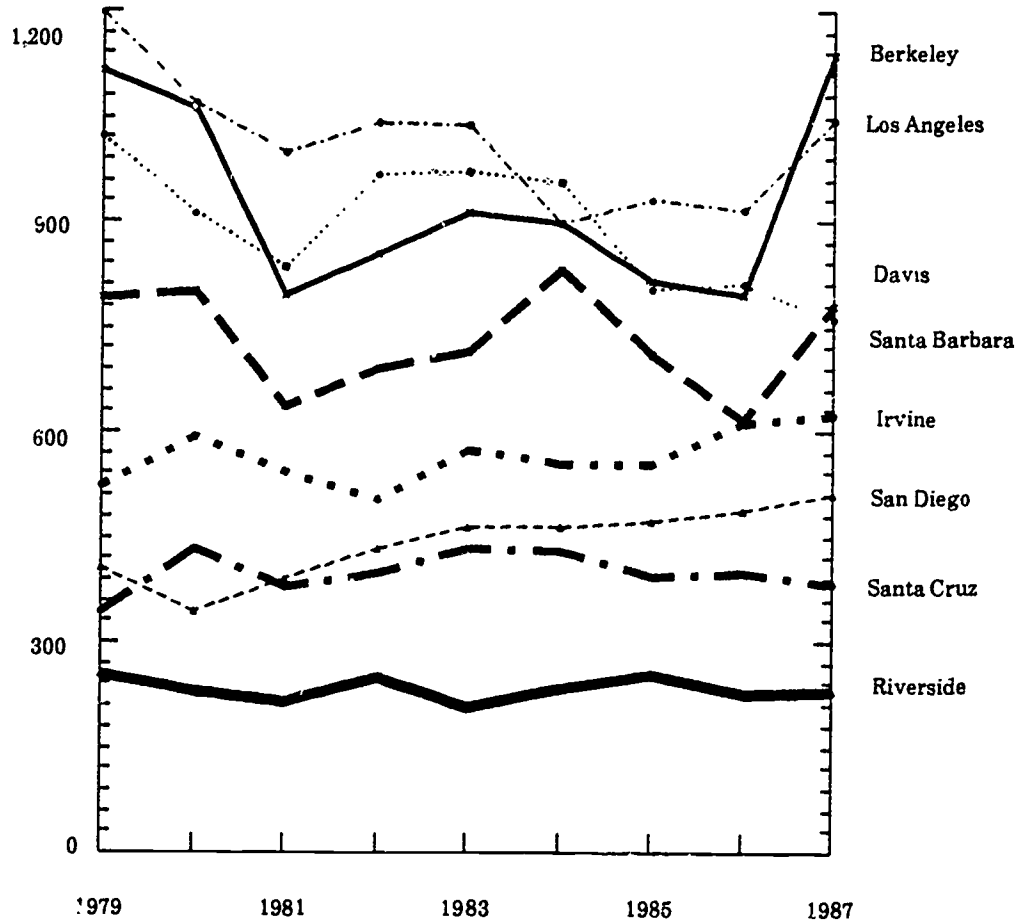
DISPLAY 2 *Number of Community College Students Who Transferred to the University of California in Fall 1965 Through Fall 1987*



<u>Year</u>	<u>Number</u>	<u>Year</u>	<u>Number</u>
1965	2,948	1977	6,392
1966	3,761	1978	6,193
1967	3,702	1979	5,649
1968	3,785	1980	5,428
1969	4,458	1981	4,778
1970	5,166	1982	5,137
1971	6,154	1983	5,305
1972	7,165	1984	5,257
1973	8,193	1985	4,931
1974	7,813	1986	4,858
1975	8,002	1987	5,465
1976	7,123		

Source: California Postsecondary Education Commission.

DISPLAY 3 *Number of Community College Students Who Transferred to Each General Campus of the University of California, Fall 1979 to Fall 1987*



<u>Campus</u>	<u>Fall 1979</u>	<u>Fall 1980</u>	<u>Fall 1981</u>	<u>Fall 1982</u>	<u>Fall 1983</u>	<u>Fall 1984</u>	<u>Fall 1985</u>	<u>Fall 1986</u>	<u>Fall 1987</u>
Berkeley	1,115	1,060	793	854	910	897	816	795	1,137
Davis	792	797	637	691	714	829	708	617	779
Irvine	522	591	541	503	573	555	553	611	625
Los Angeles	1,198	1,068	996	1,041	1,038	896	933	915	1,044
Riverside	255	228	213	250	205	234	252	226	228
San Diego	404	341	388	432	462	463	472	488	510
Santa Barbara	1,021	911	833	968	972	954	804	810	761
Santa Cruz	<u>342</u>	<u>432</u>	<u>377</u>	<u>398</u>	<u>431</u>	<u>429</u>	<u>393</u>	<u>396</u>	<u>381</u>
Total	5,649	5,423	4,776	5,137	5,305	5,257	4,931	4,858	5,465

Source: California Postsecondary Education Commission.

DISPLAY 4 *Number of Community College Students Who Transferred to Each General Campus of the University of California During 1986-87*

<u>Campus</u>	<u>Number of Students</u>
Berkeley	1,278
Davis	801
Irvine	730
Los Angeles	1,345
Riverside	310
San Diego	704
Santa Barbara	1,014
Santa Cruz	<u>572</u>
Total	6,754

Source: California Postsecondary Education Commission.

The full-year figure appears to be a 15 percent increase over 1985-86, but there is reason to believe that new students were undercounted in the winter and spring terms of the earlier year. Full-year data for 1987-88 are not yet available, since the spring term has not yet begun.

The rank-ordering of the campuses was the same for the fall term as for the full year except for a reversal of the rankings for Berkeley and Santa Barbara, with Berkeley ranking second in the fall and third for the full year and Santa Barbara third in the fall and second for the full year. Los Angeles ranked first in 1986-87 with a full-year total of 1,345 transfer students, and Riverside ranked last with a full-year total of 310.

Differences among the eight general campuses of the University

Six of the eight campuses showed gains in Fall 1987, but their increases ranged widely around the 12.5 percent statewide increase. Berkeley increased by 43 percent or 342 students over Fall 1986 and accounted for 56 percent of the statewide increase for Fall 1987. That term, it enrolled 21 percent of the total number of students transferring to the University from Community Colleges, and its total of 1,137 was the largest in the nine-year period for which transfer data are available.

Davis had the second largest increase in numbers and percentages for Fall 1987 over Fall 1986 -- 162, or 27 percent of the statewide increase. Its total of 779 was exceeded three times during the nine-year period but represents a good recovery from the low of 617 in Fall 1986. Davis now ranks third among University campuses in the number of new transfer students it enrolls -- behind Berkeley and Los Angeles.

Los Angeles dropped from first to second place in the ranking of campuses by number of new transfer students, with a gain of 14 percent or 129 students in Fall 1987 over Fall 1986. However, its total of 1,044 constituted 19 percent of the statewide total and accounted for 21 percent of the increase statewide.

Irvine, Riverside, and San Diego each had an increase of less than 5 percent for the 1987 fall term -- 2 of less than 1 percent, and 4.5 percent, respectively, for a total of 38 additional students. Irvine and San Diego ranked fifth and sixth, respectively, among the eight campuses, and Riverside remained in eighth place.

Two campuses enrolled fewer new transfer students in Fall 1987 than in Fall 1986: Santa Barbara enrolled 6 percent fewer and dropped below a total of 800 for the first time in the nine-year period and from second to fourth rank among the eight campuses. Santa Cruz enrolled 4 percent fewer in Fall 1987 than Fall 1986 and remained seventh smallest among the eight campuses, although its total for Fall 1987 was not its smallest for the nine-year period.

Differences among Community Colleges

While there were many more gains than losses among California's 106 Community Colleges in the number of their students who transferred to the University in Fall 1987, compared with a year earlier, the changes varied widely around the systemwide increase of 12.5 percent. Changes in Community College and district figures tended to reflect changes at the eight University campuses except for Santa Barbara, where City College increased its transfer total by 36 percent -- to 309 -- at a time when the Santa Barbara campus of the University had an overall decrease in new transfer students of 6 percent.

Percentage increases and decreases that might be computed for Community College campuses can be misleading because of the wide range in number of

students who transfer to the University -- from one each from Los Angeles-Southwest, Indian Valley, Vista, Kings River, and Taft in Fall 1987 to more than 300 from Santa Barbara City College and Santa Monica College. Therefore, the following analysis involves only the direction of change at small colleges -- increases and decreases -- and percentage changes at large colleges.

San Francisco Bay Area: Almost without exception, Community Colleges and districts in the Bay Area increased the number of students they transferred to the University for Fall 1987 -- a change that is reflected in the large increases at the Berkeley and Davis campuses. The City College of San Francisco showed the largest one-year percentage increase -- 52 percent -- to a total of 160 University transfer students, followed by the Peralta district colleges with an increase of 27 percent (primarily at Laney and Merritt) and a total of 165, Chabot College with 26 percent to a total of 102, the San Mateo district colleges with 22 percent to a total of 148, and Marin Community College with 22 percent to a total of 83. The three Contra Costa district colleges also experienced increases, but their overall percentage increase was small since Diablo Valley College was already the fourth-ranking in the State with a total of 260 University transfer students in Fall 1987.

Sacramento Metropolitan Area: Led by the three Los Rios district colleges with an increase of 26 percent and a total of 308 new transfer students to the University, and with the exception of Yuba College which dropped from 23 to 20 new transfer students, the Sacramento area Community Colleges that tend to send their students to the Davis campus all had increases for Fall 1987. The Los Rios colleges present the most interesting case since their University transfer students had decreased 22.5 percent for Fall 1986, compared with Fall 1985 -- a loss that was canceled out by increased numbers of students transferring for the winter and spring terms in 1987. Current-year data are not yet available to learn whether the full-year increase will be cumulative -- or whether students are returning to the more traditional pattern of transferring in the fall term.

Sierra College increased its University transfer group by 10 students in Fall 1987 to a total of 46, while San Joaquin Delta increased its group from 74

to 78, Butte College transfer students grew from 7 to 10, and those at Solano College rose from 39 to 41.

Central California: Few students have traditionally transferred to the University from the San Joaquin Valley, preferring instead to complete their baccalaureate-degree studies at State University campuses which are closer to home. However, the trend for Fall 1987 was a clear increase -- for example, twice as many from Merced College, from 9 to 18; from 18 to 33 from Fresno City College; from 30 to 39 from the College of the Sequoias; and from 22 to 55 for the Yosemite district -- primarily from Modesto Junior College.

The Santa Cruz Area: The decrease in the number of students who transferred to the University of California, Santa Cruz, was only 15 in Fall 1987, but the decrease university-wide for Community Colleges in that region was four times as great. While the aggregate decrease was 11 percent -- to 567 students, every one of the 10 Community Colleges in the region -- Cabrillo, De Anza, Evergreen Valley, Foothill, Gavilan, Hartnell, Mission, Monterey Peninsula, San Jose, and West Valley -- transferred fewer students to the University at a time when most Community Colleges experienced increases.

The Los Angeles Area: No generalization can be made about the Los Angeles area colleges comparable to those for other areas because little consistency exists in the direction or magnitude of changes between Fall 1986 and Fall 1987 in the number of Community College students who transferred to the University, in spite of a 14 percent increase at its Los Angeles campus.

Santa Monica and Pasadena City Colleges -- which ranked second and seventh among all 106 Community Colleges in the number of students who transferred to the University in Fall 1987 -- had increases of 19 and 31 percent, respectively, while El Camino College -- which ranked twelfth -- had a decrease of 14 percent. In the Los Angeles district, East, City, and Harbor Colleges -- all with large enrollments of Hispanic students -- had an aggregate increase of 22 students to a total of 120, but the remaining six colleges had the same number or fewer transfer students in 1987, for a net district gain of nine students.

Among the other nine colleges in the Los Angeles area, four had increases, four had decreases, and one

remained the same for a net gain of 10 students and a 1987 total of 279 for the nine colleges. The largest gains were made by Cerritos College (11 students) and Mt. San Antonio College (10 students) and the largest decrease for Rio Hondo College (7 students).

Orange County: The eight Community Colleges in four districts in Orange County had a net increase of 20 percent or 105 students to a total of 637 for Fall 1987. However, the two colleges in the North Orange District had fewer University transfer students in Fall 1987 than in Fall 1986 (a 15 percent loss, to 72 students), as did Golden West College in the Coast district (a decrease of 40 percent to 41 students). Orange Coast College in the same district -- now ranked third in the State in University transfer students -- experienced a 35 percent increase to 280 students during this same period. The Saddleback district colleges had an even larger increase of 43 percent to 226 such students, while the number transferring from Rancho Santiago College (46) remained stable and small.

These year-to-year changes appear to be related to both changing demographics -- especially ethnicity -- and the number of new Community College freshmen who are recent high school graduates and who comprise the pool from which the largest numbers transfer to the University. University transfer patterns should not, of course, be isolated from State University patterns and more will be said concerning Orange County in the next major section on State University transfers.

The San Diego Area: Increases for the San Diego area colleges were for the most part small but exceeded the increase for the University campus in San Diego. The major exception was the 41 percent increase that was found for Palomar College, to a total of 99 transfer students to the University in Fall 1987. The three San Diego district colleges had an aggregate increase of 10 percent to a total of 201 while the Grossmont district colleges remained stable at 67 transfer students.

Other observations

Sixteen Community Colleges now account for 51 percent of the total students who transferred to the University in Fall 1987 with each sending more than 100 students. The two colleges that joined this

group for this report are Chabot and Sacramento City.

At the other end of the distribution, 46 Community Colleges had fewer than 25 students transfer to the University in Fall 1987 -- down from 52 in 1986. However, only Modesto Junior College had a significant increase -- more than double, to 49 students.

California State University statistics

Fall-term statistics

The number of Community College students who transferred to the State University in Fall 1987 increased 1.8 percent or by 491 students, to a total of 28,252. Thus the State University's percentage increase and increase in number of new transfer students were both less than those of the University during the same period. While smaller than the number who transferred in Fall 1985 and each fall back as far as 1970, it marks the end of a recent three-year decline. Display 5 on page 11 shows this trend from each campus from 1979 to the present.

Full-year transfer statistics

Numbers of Community College students who transferred to the State University for the fall term and the remainder of the year from 1969-70 through 1986-87 are shown in Display 6 on page 12. Numbers for each campus are shown in Display 7 on page 13. Numbers for individual Community Colleges are shown in Appendix A. Fall-term transfer students constituted 64 percent of the total in 1986-87 -- less than the high of 67 percent in 1975-76, but within the overall range during the 18-year period for which statistics are displayed. The total number of Community College students who transferred to the State University in 1986-87 was 43,666 -- the smallest number during the period shown in Display 6, and a 4 percent decrease from 1985-86. Statistics are not yet available for the full 1987-88 year, and it is possible that the 1987 fall term increase over Fall 1986 will be part of a full-year increase. However, annual changes for the full-year have included nine decreases and seven increases, with seven of the decreases occurring during the past 10 years.

Displays 5 and 7 show trends among the 19 State

DISPLAY 5 *Number of Community College Transfers to Each California State University Campus, Fall 1979 Through Fall 1987*

<u>Campus</u>	<u>Fall 1979</u>	<u>Fall 1980</u>	<u>Fall 1981</u>	<u>Fall 1982</u>	<u>Fall 1983</u>	<u>Fall 1984</u>	<u>Fall 1985</u>	<u>Fall 1986</u>	<u>Fall 1987</u>
Bakersfield	439	399	331	323	329	350	395	383	389
Chico	1,777	1,726	1,787	1,799	1,852	1,817	1,850	1,614	1,616
Dominguez Hills	874	901	840	909	943	829	677	662	731
Fresno	1,522	1,601	1,593	1,637	1,641	1,564	1,548	1,582	1,613
Fullerton	2,044	2,099	2,219	2,098	2,182	2,148	2,136	2,216	2,158
Hayward	1,013	997	1,085	1,117	1,148	1,073	1,096	924	992
Humboldt	804	748	783	654	588	564	577	486	588
Long Beach	3,062	3,021	3,269	3,474	3,105	2,915	3,007	2,735	2,850
Los Angeles	1,434	1,506	1,582	1,278	1,407	1,252	1,317	1,280	1,263
Northridge	2,371	2,323	2,180	2,237	2,187	2,277	2,312	2,254	2,062
Pomona	1,390	1,472	1,208	1,605	1,526	1,560	1,219	1,200	1,287
Sacramento	2,789	2,812	2,732	2,609	2,575	2,770	2,698	2,391	2,404
San Bernardino	514	611	596	659	718	720	840	853	1,049
San Diego	3,304	3,379	2,908	2,566	3,147	3,529	3,103	2,556	2,747
San Francisco	2,090	2,099	2,084	2,095	2,124	2,134	2,270	2,174	1,892
San Jose	2,541	2,400	2,359	2,497	2,391	2,250	2,367	2,277	2,346
San Luis Obispo	1,287	1,214	1,266	1,048	1,251	1,257	1,142	966	972
Sonoma	718	670	663	739	692	636	663	700	739
Stanislaus	<u>455</u>	<u>512</u>	<u>541</u>	<u>480</u>	<u>468</u>	<u>489</u>	<u>465</u>	<u>508</u>	<u>554</u>
Total	30,428	30,490	30,026	29,824	30,274	30,134	29,682	27,761	28,252

Source: California Postsecondary Education Commission.

University campuses over this decade. The rank-ordering of the campuses in regard to enrollment of new transfer students is similar for both fall term and full-year enrollments, with Long Beach, Sacramento, San Diego, and San Jose in the top four ranks and Bakersfield, Humboldt, and Stanislaus in the bottom three. (The next lowest ranked Sonoma on the basis of full-year statistics ranked higher on the basis of fall term alone). The 1986-87 range among the 19 campuses was from a high of 4,417 at Long Beach to a low of 600 at Bakersfield, with a median of 2,250.

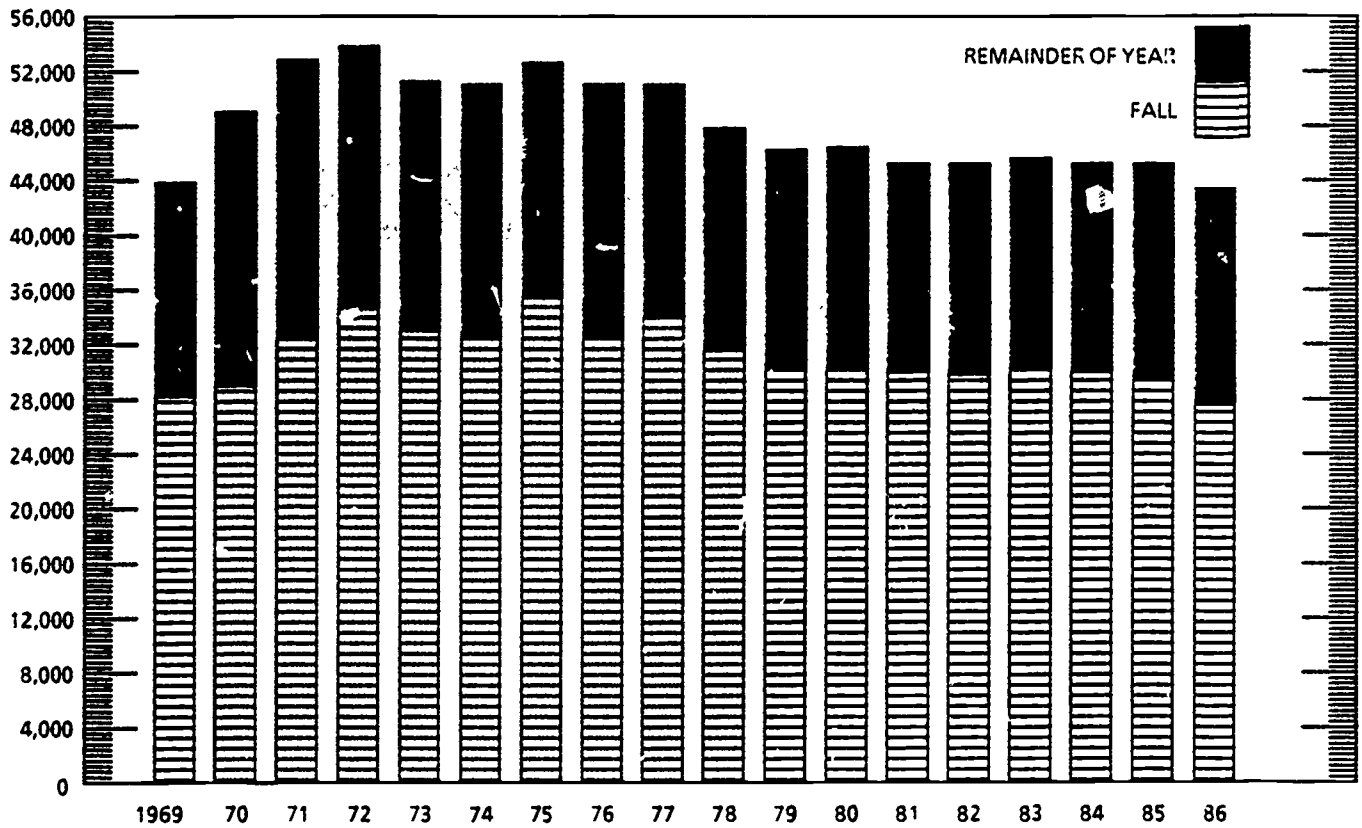
Differences among State University campuses

The largest increase was at the San Bernardino campus -- 23.0 percent and 196 students for a total of 853, but San Bernardino ranked only twelfth among the 19 campuses. Seventeenth-ranked Humboldt in-

creased by 21.0 percent and 102 students for a total of 486, while Long Beach and San Diego -- which ranked first and second -- had increases of 4.2 and 7.5 percent and increases of 115 and 191 students to 2,850 and 2,747, respectively. However, San Diego's figure was lower than 2,700 only twice in the past eight years and, that of Long Beach was lower only once than in Fall 1987 -- in Fall 1986.

The 1.8 percent systemwide increase between Fall 1986 and Fall 1987 conceals wide variations among the 19 State University campuses, with the two largest and two of the smallest making the largest gains for Fall 1987. Four State University campuses increased by at least 100 the number of Community College transfer students they enrolled in Fall 1987 over Fall 1986; seven had percentage increases above the systemwide 1.8 but fewer than 100 students; four had percentage increases below the sys-

DISPLAY 6 *Number of Community College Students Who Transferred to the California State University in Fall Term and Remainder of the Year, 1969 Through 1986*



<u>Year</u>	<u>Fall Term</u>	<u>Remainder of Year</u>	<u>Full Year</u>
1969	28,207	15,756	43,963
1970	29,059	20,186	49,245
1971	32,546	20,443	52,989
1972	34,619	19,201	53,820
1973	33,089	18,246	51,335
1974	32,646	18,498	51,144
1975	35,537	17,380	52,917
1976	32,653	18,577	51,230
1977	34,001	17,158	51,159
1978	31,609	16,361	47,970
1979	30,428	15,898	46,326
1980	30,490	16,159	46,649
1981	30,026	15,257	45,283
1982	29,824	15,576	45,400
1983	30,274	15,452	45,726
1984	30,134	15,342	45,476
1985	29,682	15,787	45,469
1986	27,761	15,905	43,666

Source: California Postsecondary Education Commission.

DISPLAY 7 *Full-Year Numbers of Community College Transfer Students to the California State University, 1979-80 Through 1986-87*

<u>Campus</u>	<u>1979-80</u>	<u>1981-82</u>	<u>1982-83</u>	<u>1983-84</u>	<u>1984-85</u>	<u>1985-86</u>	<u>1986-87</u>
Bakersfield	807	465	508	508	514	598	600
Chico	2,320	2,355	2,474	2,447	2,411	2,447	2,200
Dominguez Hills	1,420	1,287	1,462	1,388	1,219	1,067	1,025
Fresno	2,126	2,210	2,313	2,289	2,195	2,180	2,300
Fullerton	3,181	3,427	3,043	3,323	3,368	3,402	3,362
Hayward	1,688	1,782	1,886	1,939	1,816	1,856	1,685
Humboldt	1,116	1,026	885	770	726	739	663
Long Beach	4,502	4,881	4,873	4,539	4,336	4,582	4,417
Los Angeles	2,735	2,939	2,578	2,638	2,427	2,487	2,442
Northridge	3,614	3,312	3,368	3,284	3,520	3,415	3,327
Pomona	2,308	1,903	2,423	2,428	2,418	2,220	2,124
Sacramento	3,922	3,671	4,026	4,027	3,972	3,861	3,659
San Bernardino	797	886	1,023	1,038	1,069	1,282	1,303
San Diego	4,845	4,547	4,235	4,670	4,930	4,776	4,388
San Francisco	3,096	3,074	3,143	3,181	3,200	3,269	3,197
San Jose	3,794	3,507	3,627	3,547	3,547	3,612	3,489
San Luis Obispo	2,350	2,309	1,804	2,066	2,174	1,946	1,680
Sonoma	1,030	927	1,032	952	888	951	988
Stanislaus	<u>675</u>	<u>778</u>	<u>697</u>	<u>692</u>	<u>746</u>	<u>759</u>	<u>817</u>
Total	46,326	45,283	45,400	45,726	45,476	45,381	43,666

Source: California Postsecondary Education Commission.

temwide percentage, and four had fewer transfer students in Fall 1987 than Fall 1986.

The seven campuses with percentage increases that are larger than the systemwide increase of 1.3 percent are -- in order of number of students by which they increased -- Pomona, San Jose, Hayward, Dominguez Hills, Stanislaus, Sonoma, and Fresno. Their percentage increases ranged from 2.2 at Fresno (31 students) to 9.5 at Stanislaus (48 students). The Bakersfield, Chico, Sacramento, and San Luis Obispo campuses each increased less than the systemwide 1.8 and ranged from 2 additional students at Chico to 13 at Sacramento.

The Fullerton, Los Angeles, Northridge, and San Francisco campuses all enrolled fewer transfer students in Fall 1987 than in Fall 1986. The largest decrease was at San Francisco State -- 282 fewer students for a decrease of 13.0 percent, undoubtedly as a partial result of the increased number of Bay Area

Community College students who enrolled on the Berkeley campus of the University in Fall 1987. The Northridge campus had the second largest decrease (8.5 percent and 192 students), followed by Fullerton (2.6 percent and 53 students), and Los Angeles (1.3 percent and 17 students). These decreases may reflect the increase in Los Angeles area students who transferred to the Los Angeles campus of the University.

Differences among Community Colleges

Community College students who transfer to the State University tend to enroll at the campus that is closest to their Community College unless none is within commuting distance. Students who transfer to the University tend to exhibit similar behavior, but the University of course has far fewer campuses to which they can commute. Thus within the major geographic regions of California, increases of trans-

fer students to some impacted University campuses have been accompanied by decreases in transfer to nearby State University campuses. However, the vast difference in total numbers transferring statewide to the two university systems -- a ratio for the fall term of better than 5 to 1 favoring the State University -- limits the usefulness of some intersegmental comparisons for particular Community Colleges.

The San Francisco Bay Area: The San Francisco and Hayward campuses of the State University are two to which students from at least 13 Community Colleges in the Bay Area are likely to transfer and to whom the Berkeley campus of the University is also geographically accessible. The 43 percent increase in the number who transferred to Berkeley for Fall 1987 was accompanied by a 13 percent decrease in the number who transferred to San Francisco State and an 11 percent decrease in the total number of students transferring to the State University from Community Colleges in the San Francisco and San Mateo districts. Although the Hayward campus had an increase of 7 percent in Fall 1987, the Peralta district colleges, two of the three Contra Costa district colleges, and Chabot College had an aggregate decrease of 9 percent in students transferring to the State University system at large. Only Ohlone College -- whose students may also commute to San Jose State -- and Los Medanos College -- with a small but rapidly growing enrollment -- showed increases in transfer students to the State University system, thus suggesting that the special efforts of the Berkeley campus to articulate programs and services with nearby Community Colleges are now successful in attracting qualified transfer students and that many of these students -- given a choice -- prefer to transfer to Berkeley over nearby State University campuses.

The San Jose Area: San Jose State University has at least 11 Community Colleges in its service area and had an increase of 3 percent or 69 transfer students in Fall 1987. Of these 11 colleges, 8 had an overall increase to the State University of 7 percent or 57 students. Only Foothill College had a decrease of more than 10 percent, and both Foothill and De Anza Colleges had fewer University transfer students in Fall 1987 than in Fall 1986.

Increases of at least 10 percent occurred for San Jose City, Hartnell, and Ohlone Colleges, each of whom had slightly fewer University transfer students that

same term. Other area colleges with at least a 5 percent increase are Gavilan and Cabrillo, while West Valley, Mission, and De Anza had less than a 5 percent increase. These changes suggest that the recent impactation of enrollment at the Santa Cruz campus of the University may be having the effect of diverting some transfer students from area Community Colleges to State University campuses in general and to San Jose State in particular.

North of the San Francisco Bay Area: Sonoma State University -- with a 6 percent increase in Community College transfer students -- is more accessible than other State University campuses in terms of distance to students from five Community Colleges in four districts north of San Francisco. However, none of these colleges increased their flow of State University transfer students by as much as 5 percent, and three in two districts -- Marin and Napa -- had very small decreases for Fall 1987. At the same time, three of the four districts increased their flow of transfer students to the University, with only Santa Rosa College sending slightly fewer students than earlier.

The Sacramento Area: While six of the seven Community Colleges in five districts in the Sacramento State service area increased the number of students they transferred to the University in Fall 1987, only Sierra and American River Colleges increased their numbers going to State University campuses -- each by more than 10 percent. However, the increase for American River was offset by decreases in students from Sacramento City and Cosumnes River Colleges in the same district -- for reasons which are difficult to discern. Yuba College had small decreases in numbers of students transferring to both the University (three fewer) and the State University (two fewer) but the overall percentage change was small (minus 2 percent).

The number of Community College students transferring to Sacramento State University each year appears to fluctuate a good deal and not especially in relation to changes in the enrollment of such students at the University's nearby Davis campus. As Davis develops more transfer agreements with Community Colleges in the region, Sacramento State's Community College transfer enrollment may possibly decline, as it perhaps is now because of the rapidly increasing enrollment of such students at the Sacramento campus of National University. In any

case, the transfer patterns of Community College students in the Sacramento area are more difficult to explain than in most other parts of the State, and a longer-term analysis of both freshman and transfer enrollments using full-year statistics is needed to provide further insights into transfer student behavior there.

The Central California Region: Community Colleges in Central California have sent few transfer students to the University during their long history, seeming instead to prefer the closer Fresno and Stanislaus campuses of the State University. In the Fall 1987, however, six of the seven Community Colleges that feed into these campuses increased their flow of transfer students to University campuses by an aggregate 46 percent and 70 additional students to a total of 224. This occurred at a time when there was a net increase of only 11 students (less than 1 percent) from these same Community Colleges to the State University systemwide. The increase of 50 State University transfer students from Fresno City College was offset by a decrease of 52 such students from the College of the Sequoias. Columbia, Merced, and Modesto Junior Colleges each had relatively small increases at the State University overall, while Kings River had none and San Joaquin Delta had about 5 percent fewer.

Thus it appears that at least some of the increase in University transfer students is at the expense of State University transfers at several Central California Community Colleges. Nonetheless, the State University campus at Fresno had an overall increase of 2 percent (31 students) from Community Colleges statewide in Fall 1987 and the Stanislaus campus increased by 9.5 percent (48 students), from which it is possible to conclude that the status of transfer to these two State University campuses remains healthy.

Orange County: The eight Community Colleges in four districts in Orange County had gains and losses in numbers of transfer students to the State University in Fall 1987 that tended to cancel one another out (a net increase of five students) but the sixth-ranked State University campus at Fullerton had a decrease of 3 percent or 58 students. This occurred at a time when these Community Colleges increased their flow to the University by 19 percent and 105 students. However, differences among the districts and among the colleges within the Coast district

make generalizations about transfer difficult for Orange County. Both Cypress and Fullerton Colleges in the North Orange district had fewer transfer students to both the University and the State University in Fall 1987 than in Fall 1986 -- 4 percent or 52 fewer students, with the larger percentage loss for University transfers.

The Saddleback district colleges had a net gain of three State University transfer students (Saddleback College's decrease was matched by Irvine Valley's increase), but both colleges increased their flow to the University by a combined 40 percent and 68 students.

The Coast district increased the flow of students to both the University and the State University, but the large gains made by Orange Coast College were reduced by the losses experienced by Golden West College -- particularly to the University. (Nontraditional Coastline College has relatively few transfer students to either segment, and its changes do not affect the district's numbers significantly.) With its increase for Fall 1987, Orange Coast College has now overtaken the City College of San Francisco as the college with the largest number of State University transfer students.

Finally, Rancho Santiago College showed little change between the Fall 1986 and Fall 1987 terms -- increasing its University transfer students by two but with a decrease of seven transfer students to the State University.

The San Diego Area: San Diego State is the closest State University campus for nine Community Colleges in six districts. Between Fall 1984 and Fall 1986, it decreased the number of new Community College transfer students whom it enrolled by 28 percent or almost 1,000 students, thus limiting transfer opportunities in this part of the State. Now it has made a partial recovery in Fall 1987 by increasing 7.5 percent or 191 additional transfer students and, as Display 5 earlier showed, was the campus enrolling the second largest number of such students.

Seven of the nine Community Colleges in this area reflected this increase, but San Diego City dropped less than 5 percent and the much smaller Imperial Valley College, 13 percent. In spite of increases for two colleges, the San Diego district net increase was less than 5 percent, compared with increases of 27

percent for the nearby Grossmont district, 28 percent for Palomar College, 32 percent for Southwestern College, and 10 percent for the relatively small MiraCosta College.

Since the San Diego area colleges also increased their flow of transfer students to the University while State University transfer enrollments were increasing, it appears that conditions for transfer in that part of California are good once again.

Los Angeles County: Los Angeles County -- with four State University campuses and 21 Community Colleges in 13 districts -- defies generalization with respect to trends in transfer. The best that can be said is that conditions have not deteriorated during the past year and might be expected to improve by Fall 1988 when some programs to improve transfer should begin to show results and as recovering Community College enrollments should produce a larger pool of potential transfer students.

Meanwhile, the nine-college Los Angeles district showed a net increase of 1 percent and 25 State University transfer students for Fall 1987, but differences among the colleges were great. East Los Angeles College, with a large ethnic minority enrollment, had the largest gain in numbers (59) and a percentage increase of 22 -- smaller than that obtained for the Trade-Technical College which had far fewer transfer students. Other colleges in the district which had increases in numbers -- from largest to smallest -- were Valley (25), West (16), and City (8), while those with decreases were Pierce (48, but still with the largest transfer group), Southwest (30, now with the second smallest), Mission (16, still the smallest), and Harbor (11, but with an increase of 6 University transfer students).

Among the remaining 12 Community Colleges in Los Angeles County, eight experienced a combined increase of 189 students who transferred to the State University and four a combined decrease of 76, for a net gain of 113 or 2.5 percent. Increases of at least 5 percent occurred at Antelope Valley, Cerritos, Compton, El Camino, Long Beach, and Pasadena City Colleges, with the largest gains in numbers found for El Camino (84) and Long Beach (46). Colleges that had fewer State University transfer students in Fall 1987 than in Fall 1986 were Glendale, Mt. San Antonio and Rio Hondo Colleges, and College of the Canyons -- with each of the two latter de-

creases about 15 percent and Rio Hondo also having fewer students transfer to the University.

The increases found for the Dominguez Hills and Long Beach campuses of the State University are reflected in some of the increases for colleges outside the Los Angeles district, but the Pomona campus, which also experienced an increase, tends to enroll students from beyond the Los Angeles area because of its specialized programs.

Independent college and university transfer statistics

Each year the president of the Association of Independent California Colleges and Universities assists Commission staff in requesting information from member institutions about the sources of their new freshman and Community College transfer students. This year the request was made and responded to by most institutions in time for inclusion in this report. Data in this edition of the report will be revised as new information is received from institutions who were unable to respond in time for this edition.

Numbers of Community College students who transferred to regionally accredited independent institutions are shown in Display 8 for Fall 1986 and Fall 1987 and for each Community College in Appendix A. Statistics for earlier years are omitted from Display 8 because the unreliability of information from some institutions and the differing numbers of institutions which reported from year to year make trend analysis somewhat risky.

Forty-eight institutions reported a total of 8,086 new transfer students from Community Colleges in Fall 1987, to which might be added about 700 students who transferred to five institutions which reported in 1986 but not yet in 1987. Thus the increase between 1986 and 1987 appears to be at least 25 percent.

National University accounts for a major part of the difference between the last two years, with an increase of 68 percent. Numbers which this institution reported as newly enrolled in the fall underrepresent the total for the year since students enroll at periodical intervals during the year under a nontraditional academic calendar. The University of Southern California enrolled the second largest number of transfer students in Fall 1986 (527, or 8 percent of

DISPLAY 8 *Number of Community College Students Who Transferred to Independent California Colleges and Universities. Fall 1986 and Fall 1987*

<u>Independent College or University</u>	<u>1986</u>	<u>1987</u>
Azusa Pacific University	132	109
Biola University	39	47
California Baptist College	89	64
California College of Arts & Crafts	36	40
California Institute of the Arts	36	29
California Institute of Technology	3	2
California Lutheran College	139	80
Christ College, Irvine	--	25
Chapman College	--	167
Claremont McKenna College	7	6
Cogswell College	8	17
College of Notre Dame	57	60
Dominican College of San Rafael	12	26
Fresno Pacific	58	49
Golden Gate University	184	238
Holy Names College	29	--
Humphreys College	3	75
Loyola Marymount College	168	188
Master's College	24	30
Menlo College	26	--
Mills College	69	38
Monterey Institute	10	15
Mount St. Mary's	74	51
National University	3,058	5,293
Northrop University	180	7
Occidental College	13	10
Pacific Union	74	38
Patten College	6	5
Pepperdine University	85	101
Pitzer College	10	6
Point Loma Nazarene College	118	169
Pomona College	2	3
St. Mary's	118	92
San Francisco Conservatory of Music	3	6
Santa Clara University	59	60
Samuel Merritt College of Nursing	11	6
Scripps College	2	4
Simpson College	18	10
Southern California College	54	61
Stanford University	69	11
United States International University	37	63
University of La Verne	--	65
University of the Pacific	275	262
University of the Redlands	--	38
University of San Diego	115	134
University of San Francisco	199	119
University of Southern California	527	--
University of West Los Angeles	18	12
Westmont University	62	--
Whittier College	11	13
Woodbury College	24	140
World College West	--	2
Total	6,411	8,086

the total) but has not yet been able to report for 1987. Other institutions that reported both years experienced various gains and losses that do not appear to constitute a trend.

Twenty-two Community Colleges had more than 100 students transfer to independent colleges and universities that reported in Fall 1987. Those with

the largest numbers were Grossmont, 506, Palomar, 435; Southwestern, 433; American River, 310; Saddleback, 309; San Diego City, 287; Orange Coast, 256; San Diego Mesa, 254; El Camino, 240; and San Joaquin Delta, 216. These large numbers are related primarily to proximity to campuses of National University, particularly in the San Diego area, and to the University of the Pacific in Stockton.

3 Sex and Ethnicity of Transfer Students

Sex

Differences among the segments

The University and the State University differ with respect to the proportions of men and women who transferred from the Community Colleges for the Fall 1987 term, with men accounting for 51 percent of the University and 48 percent of the State University groups and women accounting for the remaining 49 and 52 percent, respectively, of the total groups.

The representation of women in both transfer groups has increased since Fall 1983, when women constituted 48 percent of the University and 50 percent of the State University groups, but the increase has not been steady during the five-year period.

Differences among campuses

University of California: Although more men than women transferred to the University overall in Fall 1987, more women than men transferred to the campuses at Santa Cruz (54 percent), Los Angeles (53 percent), and Irvine and Santa Barbara (51 percent each). On the other hand, three campuses had larger percentages of men than the systemwide proportion -- San Diego (57 percent), and Berkeley and Davis (54 percent each).

The California State University: In the State University, the percentage of men in the 1987 fall term transfer group ranged from 38 at San Bernardino and Stanislaus to 63 at San Luis Obispo. Other campuses with low ratios of men to women transfer students were Sonoma (39 percent), Bakersfield (40 percent), Dominguez Hills and Hayward (43 percent), and Sacramento (44 percent). In contrast, four other campuses enrolled at least 50 percent men among their transfer students -- Pomona (59 percent), Humboldt (55 percent), Chico (53 percent), and Fresno (50 percent). More than in the University, the proportion of men enrolled appears to be related to the differing curricular emphases of the various campuses -- for example, engineering and agriculture on the

one hand versus preparation for teaching on the other.

Ethnicity

Differences among the segments

The ethnic distributions of the total groups of Community College students who transferred to the University and the State University in Fall 1980 through Fall 1987 are set forth in Display 9, and the distributions for each Community College in Appendix B. All ethnic minority groups made percentage gains between 1986 and 1987 except Black students who transferred to the University and American Indian students who transferred to the State University. Because of the overall increase in the number of transfer students, numbers increased for all minority groups. Gains ranged from 0.1 to 0.6 percentage points, with all but one below 0.5.

Hispanic students: Representation of Hispanic students in the University's transfer student distribution increased 0.4 percentage points to 10.4 percent, while the comparable increase in the State University distribution was 0.6 to 11.2 -- the highest in the eight-year period in Display 9. However, Hispanic students reached their highest percentage representation in the University distribution in 1985, after which it decreased to 10.0 percent. In any case, the overall trend for both segments is toward increased numbers and percentages of Hispanic transfer students.

Black students: No such trend can be seen for Black transfer students since 1980. Numbers and percentages vary from year to year in both segments, with the highest percentage representation occurring in Fall 1983 for both segments -- 4.2 percent for the University and 6.6 for the State University. However, the number of Black transfer students in Fall 1987 did not decline from Fall 1986.

DISPLAY 9 *Ethnic Distribution of Community College Transfer Students to the University of California and the California State University, Fall 1980 - Fall 1987, in Percents*

Transfer to	Year	Ethnicity						No Response	Total*
		White	Hispanic	Black	Asian	Filipino	American Indian		
UC	1980	77.1%	7.4%	3.7%	9.6%	1.1%	1.1%	10.0%	5,356
	1981	75.5	8.1	4.0	10.2	1.2	1.0	9.9	4,778
	1982	74.8	8.3	3.8	11.1	1.3	0.7	3.6	5,137
	1983	73.0	8.9	4.2	12.0	1.0	0.9	3.3	5,305
	1984	72.5	9.6	3.3	12.2	1.5	0.9	3.0	5,257
	1985	70.7	10.8	3.3	12.6	1.7	0.9	2.4	4,931
	1986	69.5	10.0	3.9	13.7	2.0	0.9	4.4	4,858
	1987	68.7	10.4	3.6	14.0	2.3	1.0	3.6	5,465
CSU	1980	75.1	10.0	6.1	6.1	1.2	1.5	37.2	30,527
	1981	71.2	8.4	6.4	7.1	1.3	5.6	16.3	30,026
	1982	73.7	9.1	5.9	8.5	1.4	1.4	5.6	29,824
	1983	72.0	9.7	6.6	9.3	1.5	0.9	6.2	30,274
	1984	71.7	9.7	6.4	9.5	1.6	1.1	4.6	30,134
	1985	71.0	10.0	5.8	9.9	1.9	1.4	4.4	29,682
	1986	70.1	10.6	5.5	10.4	2.1	1.3	4.1	27,761
	1987	69.0	11.2	5.7	10.6	2.2	1.5	4.6	28,252

* The total includes nonresident aliens, "other" ethnicity, and nonrespondents, all of whom were excluded from the number on which the computation of percentages for the various ethnic groups was based. Therefore, numbers for specific ethnic groups that might be computed from the data in this table would likely be larger than those actually reported.

Source: California Postsecondary Education Commission.

Asian students: Numbers and the percentage representation of Asian transfer students increased steadily between 1980 and 1987 -- from 9.6 to 14.0 percent in the University and from 6.1 to 10.6 percent in the State University -- although the increases in percentage points between 1986 and 1987 were among the smallest during the period.

Filipino students: While their numbers and percentages are considerably smaller, trends for Filipino transfer students resemble those described for Asian students. At the University, the percentage for Filipino transfer students increased from 1.1 to 2.3 between Fall 1980 and Fall 1987, while at the State University it grew from 1.2 to 2.2 percent.

American Indian students: Numbers and percentages of American Indian transfer students are small in both the University and the State University, and analysis of trends is made difficult by the unreli-

ability of the self identification process for this ethnic group -- primarily false positives.

Differences among campuses

University of California: The eight general University campuses differ in regard to the ethnic composition of their Fall 1987 transfer students. The Santa Barbara and Santa Cruz campuses enrolled the largest percentages of students who were non-Hispanic white -- 78 percent each -- while the Berkeley and Los Angeles campuses enrolled the smallest percentage of such students -- 54 and 56 percent, respectively. Percentages for the remaining four campuses were San Diego, 60; Davis, 64; Riverside, 66; and Irvine, 67.

On five of the eight campuses, Asian students were the largest of the ethnic minority groups among the

Fall 1987 transfer students, and Hispanic students were more numerous than Asian students on the Riverside, Santa Barbara, and Santa Cruz campuses. However, even larger numbers of Hispanic transfer students enrolled on the Berkeley and Los Angeles campuses, which also enrolled the largest numbers of Black transfer students.

Looked at another way, the Berkeley campus enrolled 34 percent of all of the Black, 29 percent of all of the Asian, and 17 percent of all of the Hispanic transfer students, while the Los Angeles campus enrolled 26 percent of the Hispanic, 24 percent of the Black, and 22 percent of the Asian transfer students. None of the other six campuses enrolled as many as 20 percent of any of these three minority groups.

The California State University: The 19 campuses of the State University are more diverse in regard to the ethnicity of their transfer students than is the eight-campus University system. Percentages of non-Hispanic white students ranged in the former from 25 on the Los Angeles to 85 on the Chico campuses. Others with low percentages were Dominguez Hills (37 percent), San Francisco (43 percent), and Pomona (50 percent), while those with high percentages included Humboldt (80 percent), Sonoma (79 percent), and San Luis Obispo (77 percent).

Hispanic students, who constituted 11.2 percent of new State University Fall 1987 transfer students, were the largest ethnic minority group on 11 campuses. The three campuses that enrolled at least 10 percent Hispanic transfer students were San Diego

(11 percent), and Long Beach and Los Angeles (10 percent each). Asian students, who constituted 10.6 percent of the total, were the largest on six campuses -- San Francisco (14 percent), Long Beach (13 percent), San Jose (12 percent), Fullerton (10 percent), Pomona (21 percent), and Hayward (11 percent). The Dominguez Hills and Sonoma campuses enrolled more Black than Asian or Hispanic transfer students, although the latter enrolled almost as many Hispanic as Black transfer students. Dominguez Hills enrolled the largest number of Black transfer students (16 percent), with no other campus enrolling as many as 10 percent.

Sex differences in ethnic groups

University of California: While the ratio of men to women was 51 to 49 among all transfer students to the University in Fall 1987, women were a majority in the Black and white transfer groups (55 and 51 percent, respectively), as well as in the very small Filipino transfer groups (56 percent). On the other hand, women were a smaller proportion than systemwide in the Asian and Hispanic transfer groups (44 and 48 percent, respectively).

The California State University: In the State University, where women were a statewide 52 to 48 percent majority, they were a minority in the Asian transfer group (46 percent) and a larger-than-systemwide majority in the white and Black transfer groups (54 percent each).

Performance and Graduation of Transfer Students

THIS is not a report on the performance of Community College students after transfer but, instead, an update of the Commission's annual report on the flow of Community College students to California's four-year colleges and universities. However, publication of the University's new comprehensive reports on transfer student performance that are sent to each Community College affords an opportunity to call attention to (1) the academic performance of Community College transfer students, and (2) the relative proportions of baccalaureate degrees awarded to native and transfer students.

University of California performance reports

An example of the University's new summary report for one Community College is shown in Display 10, together with the layout for an individual student report and related data dictionaries that appear in Appendix C. Although the summary reports are public information, the name of the college has been removed from this sample to emphasize its use here. The college was selected as an example for this report because it is one of the largest in regard to the number of students it sends to the University each year.

A few highlights of the University-wide summary report are:

1. 87 percent of the Community College transfer students enrolled in Fall 1986 were regularly admitted in accordance with provisions for admission with advanced standing.
2. Of those regularly admitted, 90 percent completed the first year after transfer, compared to 86 percent of the smaller group of "special action" admits.
3. The Community College grade-point average for the regularly admitted students was 3.2 and the average for the other group was 3.0.
4. The University grade-point average for the first year after transfer was 2.8 or 0.43 point below the

Community College average for those regularly admitted, and 2.5 or 0.45 below the Community College average for the other group. (A grade-point differential of less than 0.5 for the first year after transfer indicates performance above the level generally expected of such students and places few transfer students in academic jeopardy, given the high averages with which they transferred.)

California State University performance reports

The State University now produces similar but not identical reports for each Community College. Further analysis of such performance data will be presented in the next Commission report on transfer and articulation.

Percent of degrees awarded

Displays 11 and 12 show the percentages of baccalaureate degrees awarded by discipline in 1982-83 and 1985-86 to students who entered the University and the State University as (1) freshmen, (2) Community College transfer students, and (3) transfer students from other institutions, including other campuses within each system. These displays are intended to illustrate the relative importance of the Community College transfer function in producing university graduates at the baccalaureate level.

University of California

Display 11 shows that the percentages of degrees awarded by the University to "native" and Community College transfer students have increased between 1982-83 and 1985-86 to 50 and 22 from 45 and 21 percent, respectively, while the percentage awarded to other transfer students decreased by six percentage points from 34 to 28. The latter change may be a result of the priority in admission with advanced standing that the University has been giving recently to Community College transfer students.

CAMPUS	REGULAR ADMITS						SPECIAL ACTION ADMITS					
	TOTAL ENROLLED	#COMPL SPRING	%SUBJECT NOT MET	GRADE POINT AVG			TOTAL ENROLLED	#COMPL SPRING	%SUBJECT NOT MET	GRADE POINT AVG		
				CC	UC	DIFF				CC	UC	DIFF
BERKELEY	95	84	2.1	3.342	2.743	.599	9	6	.0	3.142	2.331	.810
ALL COMMUNITY COLLEGES	671	626	25	34	2832	582	54	40	56	3066	2488	578
DAVIS	36	35	2.8	3.121	2.697	.424	5	5	.0	3.180	2.407	.773
ALL COMMUNITY COLLEGES	512	472	41	3264	2783	481	90	81	111	3062	2438	623
IRVINE	5	5	.0	2.848	2.331	.517	0	0	.0	.000	.000	.000
ALL COMMUNITY COLLEGES	518	462	66	3221	2896	325	59	53	153	2735	2571	164
LOS ANGELES	23	23	.0	3.305	2.644	.660	2	2	.0	3.454	2.272	1.181
ALL COMMUNITY COLLEGES	726	636	187	3268	2764	504	109	89	119	3142	2524	618
RIVERSIDE	2	2	.0	3.077	3.338	(.261)	0	0	.0	.000	.000	.000
ALL COMMUNITY COLLEGES	162	140	12	3313	3015	298	47	39	43	2851	2822	028
SAN DIEGO	12	12	.0	2.800	2.569	.231	4	3	.0	3.073	2.352	.721
ALL COMMUNITY COLLEGES	386	343	93	3174	2846	329	61	52	98	2922	2612	311
SANTA BARBARA	27	26	3.7	3.119	2.602	.517	2	2	.0	3.000	2.249	.751
ALL COMMUNITY COLLEGES	654	605	76	3126	2751	375	142	129	141	3169	2515	654
SANTA CRUZ	8	8	.0	3.331	.000	.000	1	1	100.0	2.667	.000	.000
ALL COMMUNITY COLLEGES	332	292	51	3242	000	600	50	44	120	3144	000	000
TOTAL YOUR COLLEGE	208	195	1.9	3.198	2.680	.518	23	19	4.3	3.163	2.339	.824
TOTAL ALL COLLEGES	3961	3576	79	3245	2815	430	612	527	113	3026	2546	480

DISPLAY 11 *Baccalaureate Degrees Awarded by the University of California by Type of Student and Discipline, 1982-83 and 1985-86*

Discipline	Type of Student*							
	1982-83				1985-86			
	Total Number	Native	Community College Transfer	Other Transfer	Total Number	Native	Community College Transfer	Other Transfer
Agriculture	525	50%	19%	31%	453	65%	14%	21%
Business and Management	946	54	22	24	1,040	55	24	21
Communication	451	50	16	34	401	61	16	23
Computer and Information Sciences	562	43	24	33	645	48	27	25
Education	122	51	23	26	74	47	23	30
Engineering and Related Technologies	2,066	53	22	25	1,831	59	24	17
Foreign Languages	409	41	21	38	422	45	24	31
Health Sciences	433	24	8	68	308	24	6	70
Letters	1,281	35	23	42	1,415	42	24	34
General Studies	291	34	37	29	374	45	34	21
Life Sciences	2,431	51	20	29	2,662	56	18	26
Mathematics	556	45	21	34	885	52	23	25
Multi-Interdisciplinary Studies	1,679	48	18	34	1,654	56	17	27
Physical Sciences	768	42	26	32	808	45	28	27
Psychology	1,592	47	20	33	1,702	51	22	27
Social Sciences	4,606	44	20	36	5,234	49	21	30
Visual and Performing Arts	1,264	30	27	43	1,080	35	29	36
Other	1,368	38	22	40	1,109	39	26	35
Total	21,328	45	21	34	22,097	50	22	28

*Row for each year adds to 100 percent.

Source: California Postsecondary Education Commission.

The four fields in which native students received the highest percentages of baccalaureate degrees in 1985-86 were agriculture (65 percent), communications (64), engineering (59), and business and management (55).

The four disciplines in which Community College

students received the highest percentages of degrees awarded are general studies (34, compared with 45 percent awarded to native students), visual and performing arts (29, compared with 35 percent awarded to native students), physical sciences (28, compared with 45 percent awarded to native students), and

DISPLAY 12 *Baccalaureate Degrees Awarded by the California State University by Type of Student and Discipline, 1982-83 and 1985-86*

Discipline	Type of Student*							
	1982-83				1985-86			
	Total Number	Native	Community College Transfer	Other Transfer	Total Number	Native	Community College Transfer	Other Transfer
Agriculture	1,020	25%	52%	23%	877	24%	53%	23%
Business and Management	11,523	20	52	28	11,856	23	54	23
Communication	2,241	21	47	31	2,541	26	43	26
Computer and Information Sciences	881	20	42	38	1,694	19	45	36
Education	2,066	19	55	26	1,827	21	52	27
Engineering and Related Technologies	4,051	21	44	35	4,667	25	47	28
Foreign Languages	398	19	43	38	376	21	40	39
Health Sciences	2,377	16	52	32	2,007	18	51	31
Letters	1,337	18	47	35	1,569	22	48	30
General Studies	2,318	17	53	30	2,564	15	56	29
Life Sciences	1,304	27	40	33	1,292	29	37	34
Mathematics	425	28	36	36	606	20	40	40
Multi-Interdisciplinary Studies	366	13	43	44	318	16	42	42
Physical Sciences	780	21	41	38	801	20	44	36
Psychology	2,222	14	53	33	2,190	16	52	32
Social Sciences	3,509	18	50	32	3,304	16	54	30
Visual and Performing Arts	2,169	19	47	34	1,923	20	49	31
Other	3,972	21	52	27	3,880	24	53	23
Total	42,959	20	50	30	44,292	22	50	28

*Row for each year adds to 100 percent.

Source: California Postsecondary Education Commission.

computer and information sciences (27, compared with 48 percent awarded to native students).

Agriculture and communications were underrepresented among Community College transfer students

receiving degrees -- at 14 and 16 percent, respectively. These students accounted for 24 percent each of the business and management and engineering degrees, compared with 22 percent for all disciplines combined.

The California State University

The State University awarded 50 percent of its baccalaureate degrees to Community College transfer students in 1985-86, 22 percent to students who began their work on the campus that awarded them the degree, and 28 percent to students who transferred from another State University campus or an institution other than a California Community College. The percentage was the same for Community College transfer students receiving degrees in 1982-83 but represents an increase of two percentage points for native students and a decrease of two percentage points for other transfer students.

Among the 18 fields, Community College transfer students earned more than 50 percent of the 1985-86 degrees in general studies (56, compared with 15 percent awarded to native students), business and

management (54, compared with 23), social sciences (54, compared with 16), and agriculture (53, compared with 24). In contrast, only 37 percent of the State University's 1985-86 degrees in life sciences were awarded to Community College transfer students, compared with 29 percent awarded to native students, and 40 percent each in foreign language and mathematics, compared with 21 and 20 percent, respectively.

The importance of the Community College transfer student cohort of the State University's upper division is demonstrated by the high percentage of the State University's degrees these students earn. They are receiving degrees in career-oriented fields such as agriculture, business, education, and engineering, as well as in the liberal arts and sciences that may lead to teaching careers even though they are not reflected as career oriented in Display 12.

APPENDIX A

Flow of Transfer Students from California Community College Districts and Colleges to the University of California, the California State University, and Regionally Accredited Independent Colleges and Universities, Fall Term and Full-Year Statistics

District, College, and Year	Number of Transfers to:				
	University of California		The California State University		Independent Institutions
	Fall	Full Year	Fall	Full Year	Fall
ALLAN HANCOCK JOINT COMMUNITY COLLEGE DISTRICT					
Allan Hancock College					
1981-82	21		170	276	
1982-83	28		166	248	6
1983-84	34		159	259	11
1984-85	35		162	271	7
1985-86	35		141	237	
1986-87	24	36	146	242	35
1987	24		134		36

District, College, and Year	Number of Transfers to:				
	University of California		The California State University		Independent Institutions
	Fall	Full Year	Fall	Full Year	Fall
ANTELOPE VALLEY COMMUNITY COLLEGE DISTRICT					
Antelope Valley College					
1981-82	18		123	162	
1982-83	16		105	150	6
1983-84	21		137	184	20
1984-85	31		134	191	18
1985-86	23		147	198	
1986-87	18	23	108	160	15
1987	19		122		25

District, College, and Year	Number of Transfers to:				
	University of California		The California State University		Independent Institutions
	Fall	Full Year	Fall	Full Year	Fall
BARSTOW COMMUNITY COLLEGE DISTRICT					
Barstow College					
1981-82	10		33	42	
1982-83	1		21	28	0
1983-84	3		19	30	0
1984-85	5		20	39	2
1985-86	3		30	43	
1986-87	2	2	25	35	11
1987	2		22		15

District, College, and Year	Number of Transfers to:				
	University of California		The California State University		Independent Institutions
	Fall	Full Year	Fall	Full Year	Fall
BUTTE COMMUNITY COLLEGE DISTRICT					
Butte College					
1981-82	9		348	534	
1982-83	16		406	639	4
1983-84	8		401	612	14
1984-85	8		345	534	3
1985-86	15		410	595	
1986-87	7	9	323	527	17
1987	10		366		21

District, College, and Year	Number of Transfers to:				
	University of California		The California State University		Independent Institutions
	Fall	Full Year	Fall	Full Year	Fall
CABRILLO COMMUNITY COLLEGE DISTRICT					
Cabrillo College					
1981-82	151		256	376	
1982-83	164		265	382	13
1983-84	169		264	384	16
1984-85	179		227	340	28
1985-86	153		232	339	
1986-87	151	220	253	357	25
1987	143		236		23

District, College, and Year	Number of Transfers to:				
	University of California		The California State University		Independent Institutions
	Fall	Full Year	Fall	Full Year	Fall
CERRITOS COMMUNITY COLLEGE DISTRICT					
Cerritos College					
1981-82	48		535	798	
1982-83	38		555	707	18
1983-84	28		522	800	36
1984-85	48		481	730	36
1985-86	38		434	698	
1986-87	30	41	427	728	75
1987	41		449		105

District, College, and Year	Number of Transfers to:				
	University of California		The California State University		Independent Institutions
	Fall	Full Year	Fall	Full Year	Fall
CHAFFEY COMMUNITY COLLEGE DISTRICT					
Chaffey College					
1981-82	38		236	416	
1982-83	27		281	436	5
1983-84	35		280	464	40
1984-85	24		275	443	25
1985-86	24		261	447	
1986-87	26	44	276	455	39
1987	13		247		41

District, College, and Year	Number of Transfers to:				
	University of California		The California State University		Independent Institutions
	Fall	Full Year	Fall	Full Year	Fall
CITRUS COMMUNITY COLLEGE DISTRICT					
Citrus College					
1981-82	22		225	363	
1982-83	26		241	361	5
1983-84	21		263	371	58
1984-85	22		243	359	18
1985-86	24		205	373	
1986-87	26	35	214	353	57
1987	21		220		61

Number of Transfers to:

District, College, and Year	University of California		The California State University		Independent Institutions
	Fall	Full Year	Fall	Full Year	

COACHELLA VALLEY COMMUNITY COLLEGE

DISTRICT

College of the Desert

1981-82	16		81	116	
1982-83	15		98	136	5
1983-84	19		111	157	16
1984-85	31		118	161	21
1985-86	20		107	160	
1986-87	16	29	128	191	84
1987	24		130		124

COAST COMMUNITY COLLEGE DISTRICT

Coastline Community College

1981-82	4		45	70	
1982-83	7		56	75	14
1983-84	3		46	64	21
1984-85	4		39	72	2
1985-86	1		43	74	
1986-87	3	4	39	59	51
1987	7		34		76

Golden West College

1981-82	61		535	793	
1982-83	63		515	755	14
1983-84	76		528	779	39
1984-85	58		502	764	30
1985-86	61		487	770	
1986-87	68	84	423	691	63
1987	41		421		135

Orange Coast College

1981-82	223		895	1,372	
1982-83	218		915	1,318	50
1983-84	251		926	1,377	130
1984-85	225		903	1,352	65
1985-86	165		791	1,248	
1986-87	207	267	802	1,263	167
1987	280		845		256

**COLLEGE OF THE SEQUOIAS COMMUNITY
COLLEGE DISTRICT**

College of the Sequoias

1981-82	48		308	419	
1982-83	34		310	420	18
1983-84	27		303	423	27
1984-85	42		319	414	17
1985-86	23		321	416	
1986-87	30	34	363	493	42
1987	39		311		33

Number of Transfers to:

District, College, and Year	University of California		The California State University		Independent Institutions
	Fall	Full Year	Fall	Full Year	

COMPTON COMMUNITY COLLEGE DISTRICT

Compton Community College

1981-82	7		191	307	
1982-83	5		154	223	5
1983-84	6		92	162	10
1984-85	4		100	150	7
1985-86	11		84	135	
1986-87	6	8	98	137	13
1987	4		93		18

CONTRA COSTA COMMUNITY COLLEGE DISTRICT

Contra Costa College

1981-82	32		174	236	
1982-83	24		147	216	14
1983-84	31		147	212	8
1984-85	28		130	201	13
1985-86	26		129	200	
1986-87	26	34	141	207	27
1987	30		115		18

Diablo Valley College

1981-82	199		875	1,158	
1982-83	237		810	1,147	23
1983-84	213		766	1,138	78
1984-85	212		804	1,157	84
1985-86	216		829	1,221	
1986-87	242	373	767	1,115	109
1987	260		739		100

Los Medanos College

1981-82	9		71	94	
1982-83	4		67	88	8
1983-84	6		69	98	5
1984-85	19		87	123	8
1985-86	9		87	96	
1986-87	8	11	60	99	12
1987	18		73		8

EL CAMINO COMMUNITY COLLEGE DISTRICT

El Camino College

1981-82	118		802	1,206	
1982-83	131		830	1,250	20
1983-84	125		799	1,202	134
1984-85	122		774	1,151	123
1985-86	150		838	1,235	
1986-87	143	190	740	1,193	179
1987	123		794		240

District, College, and Year	Number of Transfers to:				
	University of California		The California State University		Independent Institutions
	Fall	Full Year	Fall	Full Year	Fall

FOOTHILL-DE ANZA COMMUNITY COLLEGE DISTRICT

De Anza College					
1981-82	100		547	844	
1982-83	134		604	898	16
1983-84	122		655	921	43
1984-85	96		661	1,006	23
1985-86	97		637	964	
1986-87	139	189	623	963	87
1987	122		641		88

Foothill College					
1981-82	124		403	566	
1982-83	374		58	560	58
1983-84	127		390	554	54
1984-85	118		357	566	18
1985-86	116		398	602	
1986-87	117	161	379	556	85
1987	166		330		79

FREMONT-NEWARK COMMUNITY COLLEGE DISTRICT

Ohlone College					
1981-82	22		237	338	
1982-83	24		237	347	9
1983-84	33		252	352	14
1984-85	23		245	324	19
1985-86	26		250	343	
1986-87	33	39	201	316	25
1987	31		237		29

GAVILAN JOINT COMMUNITY COLLEGE DISTRICT

Gavilan College					
1981-82	10		75	106	
1982-83	10		76	110	6
1983-84	17		78	115	12
1984-85	17		86	112	8
1985-86	14		77	103	
1986-87	14	16	101	130	8
1987	10		106		8

GLENDALE COMMUNITY COLLEGE DISTRICT

Glendale Community College					
1981-82	53		312	570	
1982-83	49		303	533	34
1983-84	69		344	525	66
1984-85	71		398	617	62
1985-86	48		362	565	
1986-87	55	73	376	599	75
1987	52		369		81

District, College, and Year	Number of Transfers to:				
	University of California		The California State University		Independent Institutions
	Fall	Full Year	Fall	Full Year	Fall

GROSSMONT COMMUNITY COLLEGE DISTRICT

Cuyamaca College					
1981-82	2		42	77	
1982-83	3		45	66	2
1983-84	3		44	63	2
1984-85	1		46	57	2
1985-86	1		30	49	
1986-87	2	8	32	59	45
1987	5		43		72

Grossmont College					
1981-82	63		501	877	
1982-83	71		435	838	31
1983-84	57		552	902	45
1984-85	42		522	835	107
1985-86	50		474	845	
1986-87	64	94	419	898	213
1987	62		528		506

HARTNELL COMMUNITY COLLEGE DISTRICT

Hartnell College					
1981-82	29		185	260	
1982-83	39		181	238	3
1983-84	27		197	250	12
1984-85	38		189	252	17
1985-86	31		185	238	
1986-87	28	37	145	205	24
1987	26		181		26

IMPERIAL COMMUNITY COLLEGE DISTRICT

Imperial Valley College					
1981-82	10		150	121	
1982-83	16		127	85	2
1983-84	14		128	108	6
1984-85	15		122	109	4
1985-86	10		136	102	
1986-87	10	11	107	143	16
1987	15		93		18

KERN COMMUNITY COLLEGE DISTRICT

Bakersfield College					
1981-82	22		373	533	
1982-83	21		333	528	10
1983-84	28		338	525	17
1984-85	25		370	537	10
1985-86	27		391	579	
1986-87	32	40	360	548	26
1987	27		351		22

Number of Transfers to:

District, College, and Year	University of California		The California State University		Independent Institutions
	Fall	Full Year	Fall	Full Year	

Cerro Coso Community College

1981-82	5		38	50	
1982-83	3		34	47	0
1983-84	8		43	53	0
1984-85	4		37	48	1
1985-86	6		33	45	
1986-87	6	6	33	49	12
1987	11		36		10

Porterville College

1981-82	3		67	95	
1982-83	6		82	106	3
1983-84	10		78	99	8
1984-85	3		69	83	11
1985-86	2		62	83	
1986-87	4	4	66	91	6
1987	4		82		9

LAKE TAHOE COMMUNITY COLLEGE DISTRICT

Lake Tahoe Community College

1981-82	3		15	22	
1982-83	2		19	30	0
1983-84	5		18	27	0
1984-85	8		33	46	1
1985-86	2		20	28	
1986-87	5	8	18	21	7
1987	4		16		2

LASSEN COMMUNITY COLLEGE DISTRICT

Lassen College

1981-82	6		42	55	
1982-83	6		57	75	2
1983-84	7		59	72	1
1984-85	2		43	48	1
1985-86	2		45	56	
1986-87	1	2	61	75	6
1987	5		51		6

LONG BEACH COMMUNITY COLLEGE DISTRICT

Long Beach City College

1981-82	50		681	973	
1982-83	52		646	905	12
1983-84	31		637	939	42
1984-85	59		512	807	35
1985-86	41		567	900	
1986-87	44	58	478	789	85
1987	49		524		143

Number of Transfers to:

District, College, and Year	University of California		The California State University		Independent Institutions
	Fall	Full Year	Fall	Full Year	

LOS ANGELES COMMUNITY COLLEGE DISTRICT

East Los Angeles College

1981-82	52		416	707	
1982-83	47		338	626	13
1983-84	50		351	593	37
1984-85	38		360	646	35
1985-86	30		299	568	
1986-87	35	40	270	489	51
1987	42		329		47

Los Angeles City College

1981-82	69		452	806	
1982-83	83		427	780	18
1983-84	88		407	736	53
1984-85	59		336	601	67
1985-86	54		359	655	
1986-87	46	63	307	562	134
1987	53		315		189

Los Angeles Harbor College

1981-82	35		379	570	
1982-83	40		355	523	15
1983-84	47		351	498	36
1984-85	30		337	514	51
1985-86	25		232	377	
1986-87	19	30	247	388	37
1987	25		236		69

Los Angeles Mission College

1981-82	1		37	59	
1982-83	4		38	68	2
1983-84	3		41	57	8
1984-85	10		42	60	5
1985-86	1		34	49	
1986-87	4	5	39	57	21
1987	2		23		33

Los Angeles Pierce College

1981-82	94		763	1,256	
1982-83	117		838	1,281	35
1983-84	117		741	1,143	40
1984-85	113		752	1,218	55
1985-86	98		722	1,122	
1986-87	66	112	653	1,011	68
1987	66		605		113

District, College, and Year	Number of Transfers to:				
	University of California		The California State University		Independent Institutions
	Fall	Full Year	Fall	Full Year	Fall

Los Angeles Southwest College

1981-82	7		128	208	
1982-83	4		123	199	3
1983-84	5		129	184	10
1984-85	5		110	195	8
1985-86	1		74	136	
1986-87	3	3	81	128	6
1987	1		51		19

Los Angeles Trade-Technical College

1981-82	8		141	236	
1982-83	7		121	198	4
1983-84	7		136	233	13
1984-85	4		123	208	10
1985-86	5		123	198	
1986-87	5	5	86	170	27
1987	2		108		27

Los Angeles Valley College

1981-82	90		577	911	
1982-83	562		562	903	18
1983-84	93		513	809	61
1984-85	81		494	814	37
1985-86	71		482	743	
1986-87	67	112	420	691	55
1987	66		445		77

West Los Angeles College

1981-82	39		226	326	
1982-83	31		199	303	11
1983-84	37		166	260	26
1984-85	13		149	228	25
1985-86	21		118	209	
1986-87	23	30	94	159	36
1987	18		110		59

LOS RIOS COMMUNITY COLLEGE DISTRICT

American River College

1981-82	113		785	1,115	
1982-83	123		763	1,247	11
1983-84	131		726	1,199	29
1984-85	172		719	1,108	68
1985-86	146		736	1,140	
1986-87	133	162	667	1,102	196
1987	164		711		310

Cosumnes River College

1981-82	9		162	231	
1982-83	9		164	243	4
1983-84	21		151	231	13
1984-85	24		154	226	20
1985-86	20		134	185	
1986-87	18	22	163	232	41
1987	28		150		76

District, College, and Year	Number of Transfers to:				
	University of California		The California State University		Independent Institutions
	Fall	Full Year	Fall	Full Year	all

Sacramento City College

1981-82	95		588	862	
1982-83	127		565	896	10
1983-84	101		539	914	22
1984-85	111		587	896	103
1985-86	149		587	895	
1986-87	93	128	505	804	104
1987	116		477		162

MARIN COMMUNITY COLLEGE DISTRICT

College of Marin

1981-82	78		306	454	
1982-83	84		278	430	29
1983-84	84		269	404	27
1984-85	86		273	421	60
1985-86	62		284	415	
1986-87	68	105	239	360	28
1987	83		225		53

Indian Valley Colleges

1981-82	12		95	134	
1982-83	11		93	128	4
1983-84	6		92	136	7
1984-85	5		71	114	13
1985-86	3		58	72	
1986-87	2	2	23	32	4
1987	:		16		3

MENDOCINO-LAKE COMMUNITY COLLEGE DISTRICT

Mendocino College

1981-82	0		46	65	
1982-83	3		54	70	0
1983-84	4		48	61	3
1984-85	7		43	56	2
1985-86	3		42	58	
1986-87	2	2	58	74	7
1987	4		42		10

MERCED COMMUNITY COLLEGE DISTRICT

Merced College

1981-82	12		245	331	
1982-83	21		245	333	4
1983-84	16		243	324	6
1984-85	11		233	313	13
1985-86	16		223	312	
1986-87	9	9	239	335	26
1987	18		248		30

District, College, and Year	Number of Transfers to:				
	University of California		The California State University		Independent Institutions
	Fall	Full Year	Fall	Full Year	Fall

MIRACOSTA COMMUNITY COLLEGE DISTRICT

MiraCosta College

1981-82	19		82	131	
1982-83	38		67	114	8
1983-84	33		78	105	11
1984-85	24		97	135	25
1985-86	18		85	139	
1986-87	28	42	87	124	149
1987	25		96		193

MONTEREY PENINSULA COMMUNITY COLLEGE DISTRICT

Monterey Peninsula College

1981-82	50		188	289	
1982-83	65		175	243	6
1983-84	66		192	272	25
1984-85	68		166	253	27
1985-86	61		200	288	
1986-87	61	87	153	217	48
1987	52		145		47

MT. SAN ANTONIO COMMUNITY COLLEGE DISTRICT

Mt. San Antonio College

1981-82	30		495	845	
1982-83	36		567	919	24
1983-84	36		583	926	64
1984-85	57		595	957	43
1985-86	43		610	1,021	
1986-87	51	69	560	931	60
1987	61		550		76

MT. SAN JACINTO COMMUNITY COLLEGE DISTRICT

Mt. San Jacinto College

1981-82	19		36	47	
1982-83	11		43	59	3
1983-84	13		51	71	6
1984-85	17		57	75	3
1985-86	19		51	75	
1986-87	14	21	62	84	10
1987	14		52		18

NAPA VALLEY COMMUNITY COLLEGE DISTRICT

Napa Valley College

1981-82	25		160	209	
1982-83	36		150	191	8
1983-84	36		177	233	8
1984-85	48		165	205	13
1985-86	25		152	200	
1986-87	23	30	141	192	16
1987	27		137		26

District, College, and Year	Number of Transfers to:				
	University of California		The California State University		Independent Institutions
	Fall	Full Year	Fall	Full Year	Fall

NORTH ORANGE COUNTY COMMUNITY COLLEGE DISTRICT

Cypress College

1981-82	30		426	608	
1982-83	37		383	552	13
1983-84	30		382	577	29
1984-85	32		432	646	57
1985-86	41		385	650	
1986-87	39	49	407	633	46
1987	33		395		84

Fullerton College

1981-82	58		728	1,098	
1982-83	66		726	1,062	31
1983-84	63		744	1,165	59
1984-85	57		724	1,132	45
1985-86	59		737	1,182	
1986-87	63	84	694	1,142	85
1987	54		669		135

PALO VERDE COMMUNITY COLLEGE DISTRICT

Palo Verde College

1981-82	0		5	4	
1982-83	2		1	2	0
1983-84	0		4	5	0
1984-85	0		3	6	0
1985-86	0		8	12	
1986-87	1	1	2	5	44
1987	2		12		9

PALOMAR COMMUNITY COLLEGE DISTRICT

Palomar College

1981-82	87		411	621	
1982-83	97		332	566	21
1983-84	116		427	625	50
1984-85	115		459	601	83
1985-86	91		367	552	
1986-87	70	93	322	521	173
1987	99		412		435

PASADENA AREA COMMUNITY COLLEGE DISTRICT

Pasadena City College

1981-82	135		617	975	
1982-83	129		617	988	38
1983-84	119		704	1,091	156
1984-85	141		602	967	138
1985-86	111		627	1,036	
1986-87	123	166	625	1,083	155
1987	161		656		176

District, College, and Year	Number of Transfers to:				
	University of California		The California State University		Independent Institutions
	Fall	Year	Fall	Year	

PERALTA COMMUNITY COLLEGE DISTRICT

College of Alameda					
1981-82	40		126	196	
1982-83	42		159	249	4
1983-84	51		141	226	20
1984-85	40		108	179	20
1985-86	30		107	184	
1986-87	35	64	102	188	37
1987	38		100		35

Feather River College

1981-82	1		34	42	
1982-83	5		24	33	2
1983-84	2		24	30	2
1984-85	5		24	27	0
1985-86	0		29	38	
1986-87	2	2	30	43	12
1987	4		19		2

Laney College

1981-82	43		131	204	
1982-83	30		145	248	13
1983-84	32		148	240	18
1984-85	38		170	275	22
1985-86	52		144	223	
1986-87	53	87	155	234	62
1987	68		140		28

Merritt College

1981-82	48		155	241	
1982-83	44		187	265	6
1983-84	51		174	274	21
1984-85	49		160	239	27
1985-86	41		131	199	
1986-87	38	63	140	209	36
1987	54		128		27

Vista College

1981-82	2		9	15	
1982-83	0		7	15	2
1983-84	4		10	14	1
1984-85	2		9	14	1
1985-86	2		14	25	
1986-87	2	4	13	22	1
1987	1		4		1

District, College, and Year	Number of Transfers to:				
	University of California		The California State University		Independent Institutions
	Fall	Year	Fall	Year	

RANCHO SANTIAGO COMMUNITY COLLEGE DISTRICT

Rancho Santiago College					
1981-82	44		308	488	
1982-83	29		341	520	17
1983-84	51		356	555	34
1984-85	47		302	481	31
1985-86	50		337	574	
1986-87	44	53	337	540	91
1987	46		320		143

REDWOODS COMMUNITY COLLEGE DISTRICT

College of the Redwoods					
1981-82	12		224	343	
1982-83	10		210	336	3
1983-84	13		262	359	11
1984-85	15		200	307	6
1985-86	14		285	391	
1986-87	7	7	196	281	16
1987	8		236		16

RIO HONDO COMMUNITY COLLEGE DISTRICT

Rio Hondo College					
1981-82	16		275	433	
1982-83	20		258	377	29
1983-84	14		200	327	33
1984-85	15		234	364	15
1985-86	21		213	361	
1986-87	24	26	268	419	46
1987	17		230		61

RIVERSIDE COMMUNITY COLLEGE DISTRICT

Riverside Community College					
1981-82	86		310	445	
1982-83	112		337	490	12
1983-84	104		342	505	33
1984-85	96		314	450	15
1985-86	116		331	479	
1986-87	94	125	292	455	55
1987	98		345		77

SADDLEBACK COMMUNITY COLLEGE DISTRICT

Irvine Valley College (since 1985)					
1985					
1986	25	31	29		
1987	52		42		

District, College, and Year	Number of Transfers to:				
	University of California		The California State University		Independent Institutions
	Fall	Full Year	Fall	Full Year	Fall
Saddleback College					
1981-82	111		373	589	
1982-83	113		445	667	32
1983-84	134		509	743	65
1984-85	124		552	819	60
1985-86	142		532	824	
1986-87	132	182	463	729	194
1987	174		453		309

SAN BERNARDINO COMMUNITY COLLEGE DISTRICT

Crafton Hills College					
	Fall	Full Year	Fall	Full Year	
1981-82	23		105	135	
1982-83	21		108	151	2
1983-84	15		113	158	13
1984-85	112		27	148	7
1985-86	19		110	148	
1986-87	14	17	109	144	16
1987	10		97		29

San Bernardino Valley College

1981-82	36		492	549	
1982-83	64		363	556	3
1983-84	40		348	482	14
1984-85	35		349	520	17
1985-86	33		332	490	
1986-87	21	27	239	365	89
1987	25		294		53

SAN DIEGO COMMUNITY COLLEGE DISTRICT

San Diego City College					
	Fall	Full Year	Fall	Full Year	
1981-82	52		232	399	
1982-83	72		213	377	12
1983-84	84		271	419	32
1984-85	51		261	378	142
1985-86	54		199	343	
1986-87	39	74	227	378	140
1987	48		218		287

San Diego Mesa College

1981-82	98		588	999	
1982-83	94		587	1,020	66
1983-84	90		642	998	63
1984-85	102		655	999	84
1985-86	123		569	966	
1986-87	138	214	483	933	249
1987	143		519		254

District, College, and Year	Number of Transfers to:				
	University of California		The California State University		Independent Institutions
	Fall	Full Year	Fall	Full Year	Fall
San Diego Miramar College					
1981-82	1		35	47	
1982-83	5		20	46	6
1983-84	4		38	52	2
1984-85	4		30	48	16
1985-86	5		39	64	
1986-87	5	9	31	56	48
1987	10		38		49

**SAN FRANCISCO COMMUNITY COLLEGE DISTRICT
City College of San Francisco**

1981-82	152		805	1,277	
1982-83	105		805	1,284	
1983-84	118		855	1,325	
1984-85	114		784	1,265	
1985-86	92		914	1,374	
1986-87	105	176	808	1,287	97
1987	160		688		84

SAN JOAQUIN DELTA COMMUNITY COLLEGE DISTRICT

San Joaquin Delta College					
	Fall	Full Year	Fall	Full Year	
1981-82	68		478	542	
1982-83	94		539	699	
1983-84	83		471	655	
1984-85	81		532	700	
1985-86	68		516	738	
1986-87	74	89	494	691	147
1987	78		466		216

SAN JOSE COMMUNITY COLLEGE DISTRICT

Evergreen Valley College					
	Fall	Full Year	Fall	Full Year	
1981-82	8		147	236	
1982-83	10		151	239	6
1983-84	15		173	296	8
1984-85	21		189	303	4
1985-86	12		176	267	
1986-87	20	24	162	280	15
1987	14		157		18

San Jose City College

1981-82	5		242	384	
1982-83	15		228	355	5
1983-84	14		222	356	16
1984-85	7		226	366	11
1985-86	5		212	325	
1986-87	15	11	187	294	30
1987	5		209		42

Number of Transfers to:

District, College, and Year	University of California		The California State University		Independent Institutions
	Fall	Full Year	Fall	Full Year	
SAN LUIS OBISPO COUNTY COMMUNITY COLLEGE DISTRICT					
Cuesta College					
1981-82	21		193	500	
1982-83	22		255	522	7
1983-84	11		297	554	14
1984-85	19		276	573	19
1985-86	19		214	492	
1986-87	22	23	196	453	25
1987	25		206		32

SAN MATEO COUNTY COMMUNITY COLLEGE DISTRICT

Cañada College					
1981-82	28		132	198	
1982-83	35		165	224	23
1983-84	29		145	214	18
1984-85	30		169	231	12
1985-86	24		159	233	
1986-87	21	27	115	184	31
1987	29		137		24

College of San Mateo

1981-82	104		510	752	
1982-83	100		524	772	32
1983-84	109		543	798	38
1984-85	119		548	804	54
1985-86	117		578	806	
1986-87	83	115	575	820	70
1987	96		493		61

Skyline College

1981-82	20		216	313	
1982-83	18		193	290	3
1983-84	21		165	242	11
1984-85	6		170	256	13
1985-86	12		197	280	
1986-87	17	21	177	278	27
1987	23		180		29

SANTA BARBARA COMMUNITY COLLEGE DISTRICT

Santa Barbara City College					
1981-82	194		231	316	
1982-83	217		218	294	
1983-84	281		213	291	
1984-85	251		235	339	
1985-86	245		226	320	
1986-87	227	315	209	306	55
1987	309		214		49

Number of Transfers to:

District, College, and Year	University of California		The California State University		Independent Institutions
	Fall	Full Year	Fall	Full Year	
SANTA CLARITA COMMUNITY COLLEGE DISTRICT					
College of the Canyons					
1981-82	14		75	126	
1982-83	17		110	171	2
1983-84	9		107	159	7
1984-85	18		100	163	7
1985-86	11		133	190	
1986-87	15	22	142	207	20
1987	15		121		20

SANTA MONICA COMMUNITY COLLEGE DISTRICT

Santa Monica College					
1981-82	225		445	691	
1982-83	222		419	626	59
1983-84	214		395	622	113
1984-85	205		446	696	116
1985-86	274		480	692	
1986-87	253	372	493	733	137
1987	302		504		183

SHASTA-TEHAMA-TRINITY JOINT COMMUNITY COLLEGE DISTRICT

Shasta College					
1981-82	23		259	332	
1982-83	29		252	341	7
1983-84	30		265	326	8
1984-85	25		263	359	16
1985-86	28		327	417	
1986-87	21	23	245	342	16
1987	19		324		22

SIERRA JOINT COMMUNITY COLLEGE DISTRICT

Sierra College					
1981-82	29		253	356	
1982-83	32		310	474	2
1983-84	42		354	505	14
1984-85	55		361	510	31
1985-86	53		378	565	
1986-87	36	48	335	511	45
1987	46		374		85

SISKIYOU JOINT COMMUNITY COLLEGE DISTRICT

College of the Siskiyous					
1981-82	4		83	103	
1982-83	6		69	90	1
1983-84	7		65	77	4
1984-85	11		65	81	2
1985-86	8		69	81	
1986-87	9	12	50	66	2
1987	9		51		6

Number of Transfers to:

District, College, and Year	University of California		The California State University		Independent Institutions
	Full	Full	Full	Full	
	Fall	Year	Fall	Year	
SOLANO COUNTY COMMUNITY COLLEGE DISTRICT					
Solano Community College					
1981-82	43		195	272	
1982-83	34		153	254	2
1983-84	47		167	260	17
1984-85	39		192	281	13
1985-86	46		200	291	
1986-87	39	51	163	224	37
1987	41		174		46

Number of Transfers to:

District, College, and Year	University of California		The California State University		Independent Institutions
	Full	Full	Full	Full	
	Fall	Year	Fall	Year	
SONOMA COUNTY COMMUNITY COLLEGE DISTRICT					
Santa Rosa Junior College					
1981-82	89		600	818	
1982-83	84		556	808	17
1983-84	77		589	835	30
1984-85	84		641	857	33
1985-86	99		675	940	
1986-87	90	115	655	889	45
1987	87		675		44

Number of Transfers to:

District, College, and Year	University of California		The California State University		Independent Institutions
	Full	Full	Full	Full	
	Fall	Year	Fall	Year	
SOUTH COUNTY COMMUNITY COLLEGE DISTRICT					
Chabot College					
1981-82	67		483	740	
1982-83	64		472	772	21
1983-84	73		535	844	30
1984-85	88		535	845	27
1985-86	74		522	848	
1986-87	81	116	535	858	71
1987	102		484		65

Number of Transfers to:

District, College, and Year	University of California		The California State University		Independent Institutions
	Full	Full	Full	Full	
	Fall	Year	Fall	Year	
SOUTHWESTERN COMMUNITY COLLEGE DISTRICT					
Southwestern College					
1981-82	33		256	417	
1982-83	26		245	417	11
1983-84	30		250	432	28
1984-85	37		292	417	60
1985-86	23		242	381	
1986-87	36	45	222	393	432
1987	41		293		433

Number of Transfers to:

District, College, and Year	University of California		The California State University		Independent Institutions
	Full	Full	Full	Full	
	Fall	Year	Fall	Year	
STATE CENTER COMMUNITY COLLEGE DISTRICT					
Fresno City College					
1981-82	20		620	945	
1982-83	14		609	953	17
1983-84	12		585	902	26
1984-85	16		615	973	20
1985-86	19		711	1,065	
1986-87	18	25	671	1,035	47
1987	33		721		82

Number of Transfers to:

District, College, and Year	University of California		The California State University		Independent Institutions
	Full	Full	Full	Full	
	Fall	Year	Fall	Year	
Kings River Community College					
1981-82				192	
1982-83	9		155	215	0
1983-84	6		163	207	8
1984-85	3		137	176	3
1985-86	4		132	169	
1986-87	5	5	131	175	20
1987	1		131		17

Number of Transfers to:

District, College, and Year	University of California		The California State University		Independent Institutions
	Full	Full	Full	Full	
	Fall	Year	Fall	Year	
VENTURA COUNTY COMMUNITY COLLEGE DISTRICT					
Moorpark College					
1981-82	52		266	386	
1982-83	64		291	415	11
1983-84	70		308	474	33
1984-85	70		338	464	34
1985-86	82		346	500	
1986-87	68	85	316	487	35
1987	67		357		81

Number of Transfers to:

District, College, and Year	University of California		The California State University		Independent Institutions
	Full	Full	Full	Full	
	Fall	Year	Fall	Year	
Oxnard College					
1981-82	4		34	49	
1982-83	14		39	51	2
1983-84	19		37	50	5
1984-85	10		44	51	3
1985-86	16		28	42	
1986-87	7	14	45	69	9
1987	16		37		13

Number of Transfers to:

District, College, and Year	University of California		The California State University		Independent Institutions
	Full	Full	Full	Full	
	Fall	Year	Fall	Year	
Ventura College					
1981-82	111		275	401	
1982-83	131		280	413	19
1983-84	132		299	412	38
1984-85	135		332	456	20
1985-86	113		291	411	
1986-87	115	155	308	431	50
1987	126		259		63

Number of Transfers to:

District, College, and Year	University of California		The California State University		Independent Institutions
	Full	Full	Full	Full	
	Fall	Year	Fall	Year	
VICTOR VALLEY COMMUNITY COLLEGE DISTRICT					
Victor Valley College					
1981-82	6		77	116	
1982-83	7		74	92	1
1983-84	7		87	133	5
1984-85	11		99	137	5
1985-86	10		86	126	
1986-87	12	14	74	104	8
1987	9		108		21

District, College, and Year	Number of Transfers to:				
	University of California		The California State University		Independent Institutions
	Fall	Full Year	Fall	Full Year	
					Fall

WEST HILLS COMMUNITY COLLEGE DISTRICT

West Hills College					
1981-82	1		53	67	
1982-83	0		65	81	2
1983-84	1		45	63	3
1984-85	4		53	64	3
1985-86	0		41	57	
1986-87	0	3	49	71	6
1987	5		69		15

WEST KERN COMMUNITY COLLEGE DISTRICT

Taft College					
1981-82	2		40	60	
1982-83	2		23	36	0
1983-84	1		24	36	3
1984-85	2		40	52	5
1985-86	3		33	42	
1986-87	4	4	46	62	4
1987	1		51		3

WEST VALLEY-MISSION COMMUNITY COLLEGE DISTRICT

Mission College					
1981-82	1		37	97	
1982-83	7		85	141	1
1983-84	6		102	186	11
1984-85	19		120	200	4
1985-86	7		99	191	
1986-87	16	22	127	222	8
1987	16		130		11

West Valley College					
1981-82	106		699	978	
1982-83	93		676	967	56
1983-84	108		609	939	49
1984-85	88		630	976	43
1985-86	62		643	939	
1986-87	74	100	587	917	36
1987	73		607		50

District, College, and Year	Number of Transfers to:				
	University of California		The California State University		Independent Institutions
	Fall	Full Year	Fall	Full Year	
					Fall

YOSEMITE COMMUNITY COLLEGE DISTRICT

Columbia College					
1981-82	5		64	80	
1982-83	8		60	75	5
1983-84	6		62	162	2
1984-85	7		68	86	6
1985-86	10		57	70	
1986-87	4	5	29	41	3
1987	6		45		3

Modesto Junior College					
1981-82	33		417	596	
1982-83	42		423	599	10
1983-84	40		423	617	22
1984-85	52		444	643	12
1985-86	31		432	625	
1986-87	22	32	419	621	31
1987	49		435		68

YUBA COMMUNITY COLLEGE DISTRICT

Yuba					
1981-82	25		254	319	
1982-83	16		240	307	3
1983-84	27		225	307	69
1984-85	34		266	355	3
1985-86	17		224	305	
1986-87	23	27	213	296	32
1987	20		211	35	

TOTAL					
1981-82	4,767		29,991	45,283	
1982-83	5,130		29,806	45,400	7,415
1983-84	5,305		30,274	45,726	2,926
1984-85	5,257		30,134	45,476	3,115
1985-86	4,931		29,682	45,469	
1986-87	4,858	6,754	27,761	43,616	6,001
1987	5,465		28,252		8,202

APPENDIX B

Ethnic Distribution of Community College Transfer Students to the University of California and the California State University, Fall 1986 and Fall 1987

District and College	Year	Trans- fer to	Ethnicity					Sub- total	Other	Non- Resident Alien	No Re- sponse	Grand Total	
			White	His- panic	Black	Asian	Fili- pino						Ameri- can Indian
Allan Hancock Joint Community College District													
Allan Hancock College	1986	UC	17	2	1	2	0	1	23	0	0	1	24
		CSU	103	14	2	13	5	3	140	2	0	4	146
	1987	UC	21	2	0	0	0	0	23	1	0	0	24
		CSU	95	15	4	4	5	0	123	3	0	8	134
Antelope Valley Community College District													
Antelope Valley College	1986	UC	9	0	2	4	1	0	16	1	1	0	18
		CSU	92	6	1	4	1	1	105	3	0	0	108
	1987	UC	13	2	3	1	0	0	19	0	0	0	19
		CSU	94	11	4	2	4	3	118	0	0	4	122
Barstow Community College District													
Barstow College	1986	UC	2	0	0	0	0	0	2	0	0	0	2
		CSU	18	3	0	1	2	0	24	0	0	1	25
	1987	UC	2	0	0	0	0	0	2	0	0	0	2
		CSU	13	5	2	0	0	0	20	1	0	1	22
Butte Community College District													
Butte College	1986	UC	5	0	0	0	0	0	5	0	1	1	7
		CSU	254	24	3	9	0	4	294	3	8	18	323
	1987	UC	10	0	0	0	0	0	10	0	0	0	10
		CSU	315	16	6	3	0	6	346	5	6	9	366
Cabrillo Community College District													
Cabrillo College	1986	UC	124	9	0	2	3	0	138	3	2	8	151
		CSU	208	15	0	6	4	3	236	5	4	8	253
	1987	UC	120	9	0	5	0	1	135	0	2	6	143
		CSU	188	20	1	7	1	1	218	1	5	12	236
Cerritos Community College District													
Cerritos College	1986	UC	6	10	0	10	2	0	28	0	2	0	30
		CSU	216	92	21	50	13	6	398	9	4	16	427
	1987	UC	19	6	4	8	3	0	40	0	1	0	41
		CSU	212	103	13	60	24	3	415	11	8	15	449
Chaffey Community College District													
Chaffey College	1986	UC	12	2	0	5	1	0	20	3	3	0	26
		CSU	171	37	6	13	5	6	258	5	6	7	276
	1987	UC	7	2	0	3	0	0	12	0	0	1	13
		CSU	171	25	14	15	2	3	231	3	4	9	247
Citrus Community College District													
Citrus College	1986	UC	20	1	0	0	1	0	22	0	2	2	26
		CSU	137	28	9	7	2	2	185	0	19	10	214
	1987	UC	11	4	0	2	0	0	17	0	4	0	21
		CSU	131	24	10	2	8	1	176	4	28	12	220

District and College	Year	Trans-fer to	Ethnicity						Sub-total	Other	Non-Resident Alien	No response	Grand Total
			White	Hispanic	Black	Asian	Filipino	American Indian					
Coachella Valley Community College District													
College of the Desert	1986	UC	11	2	1	0	1	0	15	0	1	0	16
		CSU	86	24	1	3	0	5	119	3	0	6	128
	1987	UC	15	6	0	2	0	0	23	0	1	0	24
		CSU	83	24	5	1	1	1	115	3	3	9	130
Coast Community College District													
Coastline Community College	1986	UC	1	1	0	1	0	0	3	0	0	0	3
		CSU	32	2	0	2	0	1	37	0	1	1	39
	1987	UC	7	0	0	0	0	0	7	0	0	0	7
		CSU	25	0	0	3	1	0	29	1	0	4	34
Golden West College	1986	UC	43	5	0	11	1	0	60	2	2	4	68
		CSU	300	19	2	62	4	6	393	10	7	13	423
	1987	UC	23	3	0	13	0	0	39	1	1	0	41
		CSU	289	19	5	78	1	5	397	5	2	17	421
Orange Coast College	1986	UC	147	8	2	24	1	2	184	4	5	14	207
		CSU	611	48	5	85	3	17	769	12	1	20	802
	1987	UC	217	16	0	28	4	0	265	2	6	7	280
		CSU	596	46	6	127	5	14	794	15	9	27	845
College of the Sequoias Community College District													
College of the Sequoias	1986	UC	23	2	0	1	0	0	25	1	0	3	30
		CSU	255	51	9	7	1	2	325	19	3	16	363
	1987	UC	29	4	0	3	1	1	38	1	0	0	39
		CSU	231	47	3	5	4	2	292	10	1	8	311
Compton Community College District													
Compton College	1986	UC	0	1	2	2	0	0	5	0	1	0	6
		CSU	8	13	49	0	0	2	72	2	9	5	88
	1987	UC	0	0	3	0	0	0	3	0	1	0	4
		CSU	10	6	64	0	0	0	80	0	11	2	93
Contra Costa Community College District													
Contra Costa College	1986	UC	11	1	3	5	0	0	20	3	1	2	26
		CSU	51	6	37	19	8	1	122	4	6	9	141
	1987	UC	11	0	6	5	2	0	24	0	4	2	30
		CSU	43	12	27	14	6	1	103	3	3	6	115
Diablo Valley College	1986	UC	178	14	6	15	0	2	215	6	6	15	242
		CSU	597	34	16	42	14	11	714	14	1	38	767
	1987	UC	189	12	4	27	7	5	244	1	7	8	260
		CSU	581	33	17	39	10	6	680	14	6	33	739
Los Medanos College	1986	UC	5	1	0	1	0	0	7	0	0	1	8
		CSU	40	8	3	1	1	2	55	1	1	3	60
	1987	UC	11	3	0	1	0	0	15	1	0	2	18
		CSU	56	6	5	1	1	1	70	0	0	3	73
El Camino Community College District													
El Camino College	1986	UC	70	21	6	26	1	2	126	3	7	7	143
		CSU	423	58	94	89	8	6	678	17	9	36	740
	1987	UC	61	14	11	22	2	0	110	0	8	5	123
		CSU	449	74	95	108	15	4	745	9	10	30	794
Foothill-De Anza Community College District													
De Anza College	1986	UC	82	4	1	36	3	0	126	1	7	6	139
		CSU	458	37	14	63	10	3	585	10	8	20	623

District and College	Year	Trans-fer to	Ethnicity					Ameri-can Indian	Sub-total	Other	Non-Resident Alien	No Re-sponse	Grand Total	
			White	His-panic	Black	Asian	Fili-pino							
Foothill College	1987	UC	59	7	1	38	0	1	106	4	7	5	122	
		CSU	426	27	14	105	10	4	586	15	9	31	641	
	1986	UC	76	2	3	20	1	0	102	2	8	5	117	
		CSU	282	20	12	31	6	2	353	5	12	9	379	
	1987	UC	73	4	3	11	1	0	92	0	9	5	106	
		CSU	224	21	8	31	4	0	288	5	15	22	330	
Fremont-Newark Community College District														
Ohlone College	1986	UC	15	5	2	5	2	0	29	1	2	1	33	
		CSU	136	23	2	14	7	3	185	1	8	7	201	
	1987	UC	15	2	0	8	1	3	29	0	2	0	31	
		CSU	159	22	8	19	11	3	222	3	3	9	237	
Gavilan Joint Community College District														
Gavilan College	1986	UC	10	3	0	0	0	0	13	0	0	1	14	
		CSU	64	19	1	5	2	1	92	1	3	5	101	
	1987	UC	7	2	0	0	0	0	9	0	1	0	10	
		CSU	73	19	0	5	3	0	100	1	1	4	106	
Glendale Community College District														
Glendale College	1986	UC	36	6	0	5	3	0	50	0	4	1	55	
		CSU	20	37	2	61	8	2	311	10	38	17	376	
	1987	UC	31	7	1	8	2	0	49	0	3	0	52	
		CSU	206	44	7	35	11	6	309	19	28	13	369	
Grossmont Community College District														
Cuyamaca College	1986	UC	1	0	0	1	0	0	2	0	0	0	2	
		CSU	21	3	0	5	0	0	29	0	2	1	32	
	1987	UC	3	1	0	0	0	0	4	0	1	0	5	
		CSU	29	4	0	3	1	0	37	2	2	2	43	
	Grossmont College	1986	UC	42	4	0	3	0	3	53	5	3	3	64
			CSU	320	30	8	23	7	5	393	9	7	10	419
1987	UC	48	7	0	4	1	0	60	0	1	1	62		
	CSU	398	43	12	21	7	10	491	8	5	24	528		
Hartnell Community College District														
Hartnell College	1986	UC	21	1	0	3	0	0	25	1	1	1	28	
		CSU	98	24	1	8	5	4	140	2	0	3	145	
	1987	UC	13	8	0	1	0	0	22	2	1	1	26	
		CSU	109	36	5	10	8	1	169	7	0	5	181	
Imperial Community College District														
Imperial Valley College	1986	UC	4	3	0	2	0	0	9	1	0	0	10	
		CSU	37	61	1	0	0	1	100	4	2	1	107	
	1987	UC	2	11	0	1	0	0	14	1	0	0	15	
		CSU	32	57	0	1	0	0	90	1	0	2	93	
Kern Community College District														
Bakersfield College	1986	UC	25	2	1	3	1	0	32	0	0	0	32	
		CSU	268	38	11	9	10	3	339	6	2	13	360	
	1987	UC	20	1	0	5	0	1	27	0	0	0	27	
		CSU	264	41	13	8	4	2	332	5	2	12	351	
Cerro Coso Community College	1986	UC	4	1	1	0	0	0	6	0	0	0	6	
		CSU	26	1	2	0	0	2	31	2	0	0	33	
	1987	UC	9	1	0	1	0	0	11	0	0	0	11	
		CSU	27	2	0	1	1	0	31	3	0	2	36	

District and College	Year	Trans-fer to	Ethnicity						Sub-total	Other	Non-Resident Alien	No Re-sponse	Grand Total
			White	Hispanic	Black	Asian	Filipino	American Indian					
Porterville College	1986	UC	2	2	0	0	0	0	4	0	0	0	4
		CSU	37	12	1	4	2	4	60	1	1	4	66
	1987	UC	3	0	1	0	0	0	4	0	0	0	4
		CSU	65	10	1	2	1	1	80	1	0	1	82
Lake Tahoe Community College District													
Lake Tahoe Community College	1986	UC	4	0	0	0	1	0	5	0	0	0	5
		CSU	16	1	0	0	0	0	17	0	1	0	18
	1987	UC	3	1	0	0	0	0	4	0	0	0	4
		CSU	15	0	0	0	0	0	15	1	0	0	16
Lassen Community College District													
Lassen College	1986	UC	0	0	0	0	0	0	0	1	0	0	1
		CSU	51	0	4	0	0	2	57	1	1	2	61
	1987	UC	4	0	1	0	0	0	5	0	0	0	5
		CSU	43	4	0	1	0	1	49	0	1	1	51
Long Beach Community College District													
Long Beach City College	1986	UC	31	1	4	3	3	0	42	1	0	1	44
		CSU	279	41	33	75	19	1	448	13	3	14	478
	1987	UC	27	4	6	9	0	0	46	1	0	2	49
		CSU	301	38	44	76	13	12	484	11	2	27	524
Los Angeles Community College District													
East Los Angeles College	1986	UC	2	16	0	9	1	0	28	0	6	1	35
		CSU	24	132	11	65	4	0	236	5	9	20	270
	1987	UC	0	25	0	9	0	1	35	0	7	0	42
		CSU	29	170	10	68	4	2	283	7	24	15	329
Los Angeles City College	1986	UC	16	6	3	12	2	0	39	0	7	0	46
		CSU	75	44	60	60	14	0	253	7	19	28	307
	1987	UC	15	8	3	15	4	1	46	1	4	2	53
		CSU	62	60	56	75	12	0	265	8	26	16	315
Los Angeles Harbor College	1986	UC	10	1	2	3	0	0	16	1	1	1	19
		CSU	122	32	36	19	17	3	229	5	1	12	247
	1987	UC	15	5	1	1	2	0	24	0	1	0	25
		CSU	121	27	40	17	9	2	216	5	4	11	236
Los Angeles Mission Collrge	1986	UC	0	2	0	2	0	0	4	0	0	0	4
		CSU	20	6	3	3	0	1	33	2	2	2	39
	1987	UC	0	2	0	0	0	0	2	0	0	0	2
		CSU	17	6	1	0	1	2	21	0	1	1	23
Los Angeles Pierce College	1986	UC	41	4	0	7	3	0	55	1	9	1	66
		CSU	483	37	14	55	8	4	601	10	15	27	653
	1987	UC	44	8	0	8	1	0	61	0	2	3	66
		CSU	430	27	10	60	9	8	544	16	18	27	605
Los Angeles Southwest College	1986	UC	0	1	2	0	0	0	3	0	0	0	3
		CSU	1	2	70	0	0	1	74	2	2	3	81
	1987	UC	0	0	1	0	0	0	1	0	0	0	1
		CSU	2	1	41	0	0	0	44	1	1	5	51
Los Angeles Trade-Technical College	1986	UC	0	0	3	2	0	0	5	0	0	0	5
		CSU	5	20	40	8	0	0	73	1	3	9	86
	1987	UC	0	0	2	0	0	0	2	0	0	0	2
		CSU	8	15	63	17	1	1	105	0	1	2	108

District and College	Year	Trans-fer to	Ethnicity						Sub-total	Other	Non-Resident Alien	No Re-sponse	Grand Total
			White	His-panic	Black	Asian	Fili-pino	Ameri-can Indian					
Los Angeles Valley College	1986	UC	38	14	2	5	1	1	61	2	3	1	67
		CSU	280	52	16	26	4	3	381	10	7	22	420
	1987	UC	45	8	2	6	2	0	63	0	2	1	66
		CSU	272	52	20	39	3	0	393	16	7	29	445
West Los Angeles College	1986	UC	4	4	7	5	0	0	20	1	2	0	23
		CSU	23	11	40	3	3	1	81	4	3	6	94
	1987	UC	6	1	6	4	1	0	18	0	0	0	18
		CSU	20	5	64	8	0	1	98	2	4	6	110
Los Rios Community College District													
American River College	1986	UC	101	8	4	9	3	2	127	2	1	3	133
		CSU	501	36	30	36	8	15	626	9	4	28	667
	1987	UC	107	15	5	22	3	4	156	2	1	5	164
		CSU	531	42	20	37	9	21	660	15	5	31	711
Cosumnes River College	1986	UC	15	3	0	0	0	0	18	0	0	0	18
		CSU	118	13	8	13	0	3	155	3	1	4	163
	1987	UC	13	1	2	7	1	2	26	2	0	0	28
		CSU	99	9	19	8	3	1	139	1	1	9	150
Sacramento City College	1986	UC	50	4	6	26	1	0	87	1	3	2	93
		CSU	235	38	49	101	8	7	438	12	35	20	505
	1987	UC	50	11	4	41	1	1	108	4	4	0	116
		CSU	236	48	38	84	3	8	417	12	29	19	477
Marin Community College District													
College of Marin	1986	UC	56	5	0	1	0	0	62	1	3	2	68
		CSU	188	6	5	12	3	2	216	4	3	16	239
	1987	UC	73	2	0	2	1	1	79	0	1	3	83
		CSU	171	3	10	8	1	1	194	6	9	16	225
Indian Valley College	1986	UC	1	1	0	0	0	0	2	0	0	0	2
		CSU	17	4	0	0	0	0	21	0	0	2	23
	1987	UC	0	0	0	0	0	0	0	0	0	1	1
		CSU	14	0	0	1	0	0	15	0	0	1	16
Mendocino-Lake Community College District													
Mendocino College	1986	UC	0	0	0	0	0	1	1	0	0	1	2
		CSU	50	3	0	0	0	1	54	3	0	1	58
	1987	UC	3	1	0	0	0	0	4	0	0	0	4
		CSU	39	1	0	0	0	1	41	0	0	1	42
Merced Community College District													
Merced College	1986	UC	4	1	1	1	0	0	7	0	2	0	9
		CSU	163	23	17	7	2	5	217	5	12	5	239
	1987	UC	11	4	0	1	0	0	16	0	2	0	18
		CSU	167	24	17	6	1	3	218	12	9	9	248
MiraCosta Community College District													
MiraCosta College	1986	UC	17	4	1	2	0	0	24	1	2	1	28
		CSU	78	1	2	3	1	0	85	1	0	1	87
	1987	UC	20	2	1	1	0	0	24	0	1	0	25
		CSU	70	10	7	2	0	1	90	3	1	2	96
Monterey Peninsula Community College District													
Monterey Peninsula College	1986	UC	46	2	6	0	0	0	54	2	3	2	61
		CSU	91	6	7	17	4	2	127	5	11	10	153
	1987	UC	36	2	2	4	1	1	46	1	4	1	52
		CSU	92	3	8	19	4	4	130	6	4	5	145

District and College	Year	Trans-fer to	Ethnicity						Sub-total	Other	Non-Resident Alien	No Re-sponse	Grand Total
			White	His-panic	Black	Asian	Fili-pino	Ameri-can Indian					
Mt. San Antonio Community College District													
Mt. San Antonio College	1986	UC	18	12	4	8	0	1	43	4	2	2	51
		CSU	319	80	39	43	16	8	505	14	12	29	560
	1987	UC	27	14	4	7	4	1	57	0	4	0	61
		CSU	294	98	34	42	24	4	496	13	16	25	550
Mt. San Jacinto Community College District													
Mt. San Jacinto College	1986	UC	9	1	0	1	0	1	12	1	0	1	14
		CSU	50	6	0	2	0	4	62	0	0	0	62
	1987	UC	12	0	0	0	0	0	12	1	1	0	14
		CSU	38	6	0	1	0	2	47	3	0	2	52
Napa Valley Community College District													
Napa Valley College	1986	UC	19	1	0	1	0	0	21	0	1	1	23
		CSU	112	11	0	7	4	1	135	2	0	4	141
	1987	UC	20	0	1	1	0	1	23	0	3	1	27
		CSU	109	6	1	5	5	1	127	2	0	8	137
North Orange County Community College District													
Cypress College	1986	UC	20	4	2	6	0	0	32	1	4	2	39
		CSU	285	40	4	37	7	2	375	12	8	12	407
	1987	UC	20	3	0	6	1	0	30	0	2	1	33
		CSU	268	35	2	49	7	4	365	11	5	14	395
Fullerton College	1986	UC	34	7	1	15	1	0	58	1	1	3	63
		CSU	517	65	8	57	4	10	661	9	2	22	674
	1987	UC	35	7	1	7	1	0	51	0	1	2	54
		CSU	475	58	10	59	11	8	621	11	10	21	669
Palo Verde Community College District													
Palo Verde College	1986	UC	1	0	0	0	0	0	1	0	0	0	1
		CSU	2	0	0	0	0	0	2	0	0	0	2
	1987	UC	2	0	0	0	0	0	2	0	0	0	2
		CSU	7	3	0	2	0	0	12	0	0	0	12
Palomar Community College District													
Palomar College	1986	UC	54	5	1	6	1	1	68	0	1	1	70
		CSU	253	21	3	13	4	3	297	8	10	7	322
	1987	UC	80	2	0	8	1	0	91	1	2	5	99
		CSU	331	26	3	18	2	5	385	8	5	14	412
Pasadena Area Community College District													
Pasadena City College	1986	UC	46	17	9	24	1	0	97	1	18	7	123
		CSU	323	59	39	110	10	4	545	12	39	29	625
	1987	UC	87	23	5	25	1	1	142	3	10	6	161
		CSU	307	69	30	148	14	3	571	12	42	31	656
Peralta Community College District													
College of Alameda	1986	UC	11	3	12	3	0	1	30	0	2	3	35
		CSU	29	6	35	17	5	2	94	5	0	3	102
	1987	UC	11	2	11	3	1	0	30	0	7	1	38
		CSU	34	6	37	8	4	1	90	4	3	3	100
Feather River College	1986	UC	0	1	0	1	0	0	2	0	0	0	2
		CSU	24	1	3	0	0	1	29	0	0	1	30
	1987	UC	2	1	1	0	0	0	4	0	0	0	4
		CSU	15	0	2	0	0	0	17	1	0	1	19

District and College	Year	Trans-fer to	Ethnicity						Sub-total	Other	Non-Resident Alien	No Re-sponse	Grand Total
			White	His-panic	Black	Asian	Fili-pino	Ameri-can Indian					
Laney College	1986	UC	25	5	7	7	1	1	46	2	3	2	53
		CSU	44	5	38	41	2	3	133	5	4	13	155
	1987	UC	24	4	12	15	1	0	56	0	7	5	68
		CSU	37	4	42	31	4	4	122	6	3	9	140
Merritt College	1986	UC	19	3	3	10	0	0	35	1	2	0	38
		CSU	54	9	36	23	2	1	125	1	5	9	140
	1987	UC	23	1	7	15	0	1	47	2	1	4	54
		CSU	45	7	27	37	2	0	118	2	2	6	128
Vista College	1986	UC	2	0	0	0	0	0	2	0	0	0	2
		CSU	8	0	2	2	0	0	12	0	0	1	13
	1987	UC	0	0	1	0	0	0	1	0	0	0	1
		CSU	2	0	2	0	0	0	4	0	0	0	4
Rancho Santiago Community College District													
Rancho Santiago College	1986	UC	15	6	3	6	1	1	32	1	8	3	44
		CSU	208	35	10	49	1	4	307	4	16	10	337
	1987	UC	21	6	1	12	1	0	41	1	3	1	46
		CSU	153	40	12	63	3	5	281	4	21	14	320
Redwoods Community College District													
College of the Redwoods	1986	UC	6	0	0	0	0	0	6	1	0	0	7
		CSU	172	5	0	2	0	8	187	1	0	8	196
	1987	UC	8	0	0	0	0	0	8	0	0	0	8
		CSU	189	7	3	4	0	7	210	7	1	18	236
Rio Hondo Community College District													
Rio Hondo College	1986	UC	8	11	0	1	0	1	21	0	2	1	24
		CSU	93	95	0	30	4	2	224	6	22	16	268
	1987	UC	7	5	1	3	0	0	16	0	1	0	17
		CSU	75	83	2	27	0	2	189	10	23	8	230
Riverside Community College District													
Riverside Community College	1986	UC	68	6	5	5	1	2	87	0	3	4	94
		CSU	208	30	17	16	0	7	278	3	3	8	292
	1987	UC	75	6	7	3	1	2	94	0	4	0	98
		CSU	249	20	25	21	5	4	324	6	5	10	345
Saddleback Community College District													
Irvine Valley College	1986	UC	18	3	1	0	0	1	23	1	0	1	25
		CSU	17	3	0	7	0	0	27	1	1	0	29
	1987	UC	34	0	1	13	3	0	51	0	1	0	52
		CSU	34	1	0	5	0	0	40	0	2	0	42
Saddleback College	1986	UC	101	6	0	9	1	3	120	1	4	7	132
		CSU	383	26	7	23	4	3	446	5	4	8	463
	1987	UC	132	13	1	16	1	1	164	0	3	7	174
		CSU	365	23	3	16	4	2	413	11	5	24	453
San Bernardino Community College District													
Crafton Hills College	1986	UC	13	1	0	0	0	0	14	0	0	0	14
		CSU	96	7	1	1	2	1	102	3	0	4	109
	1987	UC	8	0	0	1	0	0	9	0	0	1	10
		CSU	74	7	4	3	0	1	89	1	0	7	97
San Bernardino Valley College	1986	UC	11	3	2	2	0	2	20	0	0	1	21
		CSU	142	34	27	16	4	2	225	1	5	8	239
	1987	UC	19	3	1	0	0	0	23	1	0	1	25
		CSU	157	58	29	18	3	3	270	4	11	9	294

District and College	Year	Transfer to	Ethnicity						Sub-total	Other	Non-Resident Alien	No Response	Grand Total
			White	Hispanic	Black	Asian	Filipino	American Indian					
San Diego Community College District													
San Diego City College	1986	UC	20	3	5	2	3	0	33	0	3	3	39
		CSU	96	33	33	31	14	6	213	6	2	6	227
	1987	UC	21	7	6	6	2	0	42	1	4	1	48
		CSU	92	35	35	16	8	2	188	7	5	18	218
San Diego Mesa College	1986	UC	91	10	4	21	2	1	129	1	3	5	138
		CSU	347	36	21	29	15	7	455	10	6	12	483
	1987	UC	83	17	6	16	7	5	134	2	4	3	143
		CSU	360	44	16	33	24	3	480	8	4	27	519
San Diego Miramar College	1986	UC	3	0	0	2	0	0	5	0	0	0	5
		CSU	20	2	1	6	0	0	29	1	0	1	31
	1987	UC	5	1	1	1	2	0	10	0	0	0	10
		CSU	29	3	2	1	0	0	35	1	0	2	38
San Francisco Community College District													
City College of San Francisco	1986	UC	36	13	4	35	5	1	94	2	4	5	105
		CSU	185	54	56	345	39	1	680	25	27	76	808
	1987	UC	50	12	7	72	5	0	146	0	6	8	160
		CSU	143	46	56	298	40	1	584	19	35	50	688
San Joaquin Community College District													
San Joaquin Delta College	1986	UC	41	8	0	13	0	1	63	4	2	5	74
		CSU	316	49	8	66	15	8	462	8	8	16	494
	1987	UC	43	16	1	8	3	1	72	2	1	3	78
		CSU	288	48	12	57	13	12	430	6	10	20	466
San Jose Community College District													
Evergreen Valley College	1986	UC	5	4	1	6	0	1	17	1	2	0	20
		CSU	63	23	5	36	16	1	144	7	9	2	162
	1987	UC	3	3	0	2	4	1	13	0	1	0	4
		CSU	58	24	10	37	9	3	141	4	3	9	157
San Jose City College	1986	UC	6	1	2	4	0	0	13	0	2	0	15
		CSU	102	22	15	31	2	1	173	1	4	9	187
	1987	UC	3	0	0	1	0	1	5	0	0	0	5
		CSU	113	33	16	20	4	6	192	4	3	10	209
San Luis Obispo County Community College District													
Cuesta College	1986	UC	16	2	0	1	0	0	19	0	1	2	22
		CSU	150	15	3	3	3	3	187	6	3	10	196
	1987	UC	22	2	0	0	0	0	24	0	1	0	25
		CSU	171	3	0	3	6	4	193	4	0	9	206
San Mateo County Community College District													
Cañada College	1986	UC	15	1	1	0	1	0	18	0	2	1	21
		CSU	80	10	4	8	4	0	106	1	3	5	115
	1987	UC	14	4	3	4	0	1	26	0	2	1	29
		CSU	86	14	8	7	3	1	119	3	10	5	137
San Mateo College	1986	UC	50	8	2	15	2	0	77	1	1	4	83
		CSU	390	35	8	65	17	5	520	19	10	26	575
	1987	UC	65	3	0	19	3	0	90	1	3	2	96
		CSU	333	34	9	51	17	1	445	10	8	30	493
Skyline College	1986	UC	5	2	1	4	3	0	15	0	0	2	17
		CSU	101	21	5	16	12	1	156	6	4	11	177

District and College	Year	Transfer to	Ethnicity						Sub-total	Other	Non-Resident Alien	No Re-sponse	Grand Total
			White	Hispanic	Black	Asian	Filipino	American Indian					
	1987	UC	10	6	1	2	2	0	21	0	2	0	23
		CSU	83	28	12	12	13	2	150	3	13	14	180
Santa Barbara Community College District													
Santa Barbara City College	1986	UC	171	13	1	13	4	1	203	8	4	12	227
		CSU	158	20	6	7	0	4	195	7	0	7	209
	1987	UC	237	33	2	12	2	3	289	5	8	7	309
		CSU	171	14	4	8	2	2	201	3	2	8	214
Santa Clarita Community College District													
College of the Canyons	1986	UC	11	1	0	2	0	0	14	0	0	1	15
		CSU	122	5	2	3	1	1	134	2	1	5	142
	1987	UC	9	1	0	3	0	0	13	0	1	1	15
		CSU	90	10	1	2	3	0	106	3	1	11	121
Santa Monica Community College District													
Santa Monica College	1986	UC	155	14	14	21	1	2	207	4	30	12	253
		CSU	256	51	62	46	11	2	428	8	34	23	493
	1987	UC	191	19	14	30	4	4	262	4	31	5	302
		CSU	286	37	50	53	6	3	435	14	29	26	504
Shasta-Tehama-Trinity Joint Community College District													
Shasta College	1986	UC	18	1	0	0	0	0	19	1	0	1	21
		CSU	216	11	0	0	3	7	237	0	0	8	245
	1987	UC	17	1	0	0	0	0	18	1	0	0	19
		CSU	285	8	3	4	1	8	309	2	0	13	324
Sierra Joint Community College District													
Sierra College	1986	UC	33	0	0	1	0	0	34	0	0	2	36
		CSU	283	15	3	9	0	7	317	4	0	14	335
	1987	UC	41	2	0	1	0	0	44	0	1	1	46
		CSU	314	16	0	9	1	14	354	0	1	19	374
Siskiyou Joint Community College District													
College of the Siskiyous	1986	UC	7	0	1	0	0	0	8	0	0	1	9
		CSU	40	2	0	0	1	1	45	1	0	4	50
	1987	UC	8	0	0	1	0	0	9	0	0	0	9
		CSU	44	2	2	0	0	0	48	1	2	0	51
Solano Community College District													
Solano Community College	1986	UC	27	3	2	0	3	0	35	1	1	2	39
		CSU	103	11	17	8	6	0	145	6	0	12	163
	1987	UC	33	1	2	2	2	1	41	0	0	0	41
		CSU	117	4	14	9	12	4	160	5	1	8	174
Sonoma County Community College District													
Santa Rosa Junior College	1986	UC	68	4	0	8	0	0	80	1	3	6	90
		CSU	549	32	8	19	4	5	617	7	1	30	655
	1987	UC	70	4	1	4	1	1	81	0	3	3	87
		CSU	551	24	12	18	3	14	622	11	6	36	675
Southwestern Community College District													
Southwestern College	1986	UC	12	9	0	2	9	1	33	1	2	0	36
		CSU	88	56	17	11	28	2	202	7	5	8	222
	1987	UC	12	13	1	3	10	0	39	0	1	1	41
		CSU	123	87	11	11	32	7	271	6	5	11	293
South County Community College District													
Chabot College	1986	UC	44	6	3	12	5	1	71	6	0	4	81
		CSU	349	50	25	66	26	6	502	7	5	21	535

District and College	Year	Trans-fer to	Ethnicity					Sub-total	Other	Non-Resident Alien	No Re-sponse	Grand Total	
			White	Hispanic	Black	Asian	Filipino						American Indian
	1987	UC	66	10	1	11	8	0	96	1	1	4	102
		CSU	298	48	27	50	27	6	456	8	4	16	484
State Center Community College District													
Freano City College	1986	UC	9	4	1	2	0	0	16	0	1	1	18
		CSU	401	101	32	52	7	9	602	15	16	38	671
	1987	UC	17	5	3	5	0	0	30	0	1	2	33
		CSU	421	148	28	52	4	12	665	16	7	33	721
Kings River Community College													
	1986	UC	1	1	0	2	0	0	4	0	0	1	5
		CSU	86	26	1	6	1	1	121	4	1	5	131
	1987	UC	0	0	0	1	0	0	1	0	0	0	1
		CSU	83	29	1	6	2	1	122	4	1	4	131
West Kern Community College District													
Taft College	1986	UC	4	0	0	0	0	0	4	0	0	0	4
		CSU	27	5	8	4	0	0	44	0	0	2	46
	1987	UC	1	0	0	0	0	0	1	0	0	0	1
		CSU	38	2	8	2	0	1	51	0	0	0	51
Ventura County Community College District													
Moorpark College	1986	UC	54	3	0	3	0	1	61	1	0	6	68
		CSU	267	18	2	10	1	4	302	1	1	12	316
	1987	UC	49	6	0	5	2	0	62	0	4	1	67
		CSU	285	24	2	11	0	7	329	5	2	21	357
Oxnard College													
	1986	UC	0	4	0	1	1	0	6	0	0	1	7
		CSU	19	16	4	2	3	0	44	0	0	1	45
	1987	UC	13	3	0	0	0	0	16	0	0	0	16
		CSU	13	11	7	5	0	0	36	0	1	0	37
Ventura College													
	1986	UC	78	19	2	9	0	1	109	2	0	4	115
		CSU	230	36	4	18	10	4	302	1	1	4	308
	1987	UC	94	19	2	5	1	1	122	2	1	1	126
		CSU	191	34	2	13	5	1	246	2	1	10	259
Victor Valley Community College District													
Victor Valley College	1986	UC	8	1	1	1	1	0	12	0	0	0	12
		CSU	56	8	3	2	2	0	71	1	0	2	74
	1987	UC	7	0	0	1	0	1	9	0	0	0	9
		CSU	84	8	3	1	2	1	99	2	1	6	108
West Hills Community College District													
West Hills College	1986	UC	0	0	0	0	0	0	0	0	0	0	0
		CSU	27	12	1	4	1	0	45	3	0	1	49
	1987	UC	2	2	0	1	0	0	5	0	0	0	5
		CSU	45	11	4	2	2	0	64	1	0	4	69
West Valley-Mission Community College District													
Mission College	1986	UC	4	2	0	9	0	0	15	0	1	0	16
		CSU	54	18	6	36	8	0	122	3	1	1	127
	1987	UC	0	0	0	16	0	0	16	0	0	0	16
		CSU	57	16	8	35	7	1	124	3	0	3	130
West Valley College													
	1986	UC	41	7	0	16	1	0	65	0	6	3	74
		CSU	432	34	7	58	3	10	544	8	8	27	587
	1987	UC	54	7	2	7	0	0	70	0	2	1	73
		CSU	429	43	10	62	8	6	558	8	4	37	607

District and College	Year	Trans-fer	Ethnicity					Sub-total	Other	Non-Resident Alien	No Re-sponse	Grand Total	
			White	His-panic	Black	Asian	Fili-pino						Ameri-can Indian
Yosemite Community College District													
Columbia College	1986	UC	4	0	0	0	0	0	4	0	0	0	4
		CSU	26	0	0	0	0	1	27	0	0	2	29
	1987	UC	6	0	0	0	0	0	6	0	0	0	6
		CSU	35	0	1	1	0	1	39	1	0	5	45
Modesto Junior College	1986	UC	17	0	0	2	1	0	20	1	0	1	22
		CSU	335	38	2	9	1	5	390	11	4	14	419
	1987	UC	37	3	1	4	0	0	45	0	0	4	49
		CSU	339	42	5	19	1	3	409	4	3	19	435
Yuba Community College District													
Yuba College	1986	UC	15	2	0	5	0	0	22	0	1	0	23
		CSU	160	19	7	9	0	5	200	7	1	5	213
	1987	UC	14	1	1	1	0	1	18	0	0	2	20
		CSU	138	24	10	14	2	2	190	11	0	10	211
Total	1986	UC	3,005	431	168	591	86	40	4,321	100	221	216	4,858
		CSU	17,857	2,697	1,403	2,651	546	332	25,486	547	579	1,146	27,758
	1987	UC	3,466	525	183	708	115	51	5,048	217	147	53	5,465
		CSU	17,785	2,875	1,475	2,721	567	334	25,757	578	624	1,293	28,252

APPENDIX C

University of California Performance Reports for Community College Students Who Transferred Fall 1986

SAMPLE SUMMARY REPORT

ADMISSION STATUS
REGULAR

ADMISSION STATUS
SPECIAL ACTION

ALL
COMMUNITY
COLLEGE
TRANSFER BY
UC CAMPUS

CAMPUS

NUMBER OF
TRANSFERS

TRANSFERS
PENDING

WRITING PROFICIENCY
REQUIREMENT

COMMUNITY
COLLEGE C/A

U.C.
C/A

GPA
DIFFERENCE

PERFORMANCE
OF ALL
TRANSFER
PROFESSOR
COURSE

PERFORMANCE
OF ALL
COMMUNITY
COLLEGE
TRANSFER

UNIVERSITY OF CALIFORNIA												
SUMMARY REPORTS												
CAMPUS	REGULAR ADMITS						SPECIAL ACTION ADMITS					
	TOTAL ENROLLED	FRESHMANS	SUBJECT A	CC	UC	OFF	TOTAL ENROLLED	FRESHMANS	SUBJECT A	CC	UC	OFF
BERKELEY	4	4	0	3,634	3,436	198	0	0	0	000	000	000
UC COLLEGES	671	628	25	3,414	2,832	582	54	411	54	3,068	2,488	579
LAVERNE	4	4	25.0	3,404	2,900	418	0	0	0	000	000	000
ALL COLLEGES	512	472	4.1	3,264	2,781	491	40	41	11.1	3,062	2,438	623
IRVINE	5	4	0	3,119	3,031	188	1	1	0	000	000	0
ALL COLLEGES	513	472	6.6	3,121	2,811	325	61	52	18.4	2,735	2,471	264
SANTA BARBARA	4	4	0	3,135	2,921	214	1	1	0	000	2,911	2
ALL COLLEGES	654	605	2.6	3,126	2,511	375	142	129	14.1	3,161	2,116	1,045
SANTA CRUZ	0	0	0	000	000	000	0	0	0	000	2,912	0
ALL COLLEGES	332	292	5.1	3,242	000	000	50	41	11.1	3,144	000	0
TOTAL YOUR COLLEGE	24	23	4.2	3,389	3,050	311	1	3	0	2,952	2,352	600
TOTAL ALL COLLEGES	1961	1878	7.9	3,245	2,811	430	111	113	11.3	3,021	2,546	475

DATA DICTIONARY

COMMUNITY COLLEGE SUMMARY PERFORMANCE REPORTS

- 1 Transfer students who are qualified for regular admission to the University of California on the basis of one of three sets of requirements. (For a full explanation please see UC admissions materials)
- 2 Transfer students admitted in exception to regular admission requirements of the University of California. This group is made up of students who did not meet regular admission requirements but who have special talents to contribute to the campus, underrepresented ethnic minority students who show special promise, and students who failed to meet the requirements because of a minor technicality.
- 3 University of California campuses where your students enrolled
- 4 Number of students enrolling in respective UC campus
- 5 Number of entering Fall 1986 transfer students completing the Spring 1987 term
- 6 Percent of transfer students not meeting UC Subject A requirements demonstrating writing proficiency at time of enrollment
- 7 Mean entering grade point average of transfer students in courses which are transferable for UC course credit
- 8 Mean grade point average of transfer students during their first year of UC coursework
- 9 The difference between the mean entering community college grade point average in UC transferable courses and the mean UC grade point average
- 10 For comparative purposes, academic performance data are provided for transfer students from all the California Community Colleges

SAMPLE INDIVIDUAL REPORT

12 13 14 15 16 17 18 19 20 21 22 23 24 25 26 27 28 29 30 31 32 33 34 35 36 37 38 39 40 41 42 43 44 45 46 47 48 49 50 51 52 53 54 55 56 57 58 59 60 61 62 63 64 65 66 67 68 69 70 71 72 73 74 75 76 77 78 79 80 81 82 83 84 85 86 87 88 89 90 91 92 93 94 95 96 97 98 99 100

UNIVERSITY OF CALIFORNIA

INDIVIDUAL REPORT

IN THE CAMPUS

STUDENT NAME	STUDENT ID NUMBER	COURSE TITLE	DEPT	ENROLL NO	UNITS	GRADE	REMARKS
		FAIL 85 DANCE HISTORY I	DANCE	20A	4.0	A	
		BALLET III	DANCE	173A	2.0	B+	
		PAS DE NUR	DANCE	137A	2.0	A	
HIGH SCHOOL WHERE STUDENT GRADUATED		AMERICAN INDIAN					
HIGH SCHOOL GRADUATION DATE		CABRILLO SENIOR HIGH SCHOOL					
REGULAR OR SPECIAL ADMIT		REGULAR SUBJECT A					
SPECIAL PROGRAM PARTICIPANT		SCHOOL OF FINE ARTS / DANCE					
UNITS TRANSFERRED		126 B					
COMMUNITY COLLEGE		UC GRADE POINTS					

GPA DIFFERENTIAL

28 STUDENT NAME

25 STUDENT ID NUMBER

24 HIGH SCHOOL WHERE STUDENT GRADUATED

27 HIGH SCHOOL GRADUATION DATE

3 REGULAR OR SPECIAL ADMIT

6 SPECIAL PROGRAM PARTICIPANT

7 UNITS TRANSFERRED

7 COMMUNITY COLLEGE

DATA DICTIONARY

COMMUNITY COLLEGE INDIVIDUAL PERFORMANCE REPORTS

- 1 University of California campus in which individual transfer student (whose performance is being reported) is enrolled
 - 2 Student Background Data (A) Name (B) identification number (C) social security number (D) ethnicity, (E) high school from which student graduated, (F) high school graduation date of individual student, and (G) indication of whether student was eligible for admission to UC at date of high school graduation.
 - 3 Indication of whether student was a "regular" or a "special action" admission to the University. Transfer students can qualify for regular admission to the University in a number of different ways. These include establishing eligibility upon high school graduation or completing a prescribed schedule of community college course work. For a full explanation please see University admissions materials. Students can also be admitted in exception to the regular admission requirements (Special Action Admit). This group is made up of students who did not meet regular admission requirements but who have special talents to contribute to the campus, underrepresented ethnic minority students who show special promise, and students who failed to meet the requirements because of a minor technicality.
 - 4 Indication of whether student met Subject A English requirement at time of registration
 - 5 College and major student declared as course of study
 - 6 Indication of whether student participated in the following special programs: FOPs or Transfer Center
 - 7 The entering community college grade point average (GPA) in courses which are transferable for UC course credit
 - 8 Total number of community college course units transferred to UC
 - 9 Total number of course units student earned during his/her first year at UC. One unit represents 3 hours of work per week by a student including both class attendance and preparation.
 - 10 Grade points per unit are assigned as follows: A=4, B=3, C=2, D=1, F=0. When attached to the grade A B C D plus (+) grades carry 0.3 of a grade point more per unit and minus (-) grades 0.3 of grade points less per unit than unsuffixed grades except for A+ which carries 4.0 grade points per unit as does the A.
 - 11 The grade point average attained in the first year at UC. (The Santa Cruz campus does not award letter grades to undergraduates except by special request.) The UC grade point average is computed by multiplying the numerical value of each grade (i.e. grade points) by the unit value of the course. Then, the sum of the products for all courses is obtained. This sum is then divided by the total number of units taken. The resulting figure is the grade point average. For example, a grade of B in a 4-unit course is worth 12 grade points. Grades A, B, C, D, and F are used in determining grade point averages.
 Grades I (work incomplete due to circumstances beyond the student's control but of passing quality), IP (work in progress, final grade to be assigned upon completion of entire course sequence), P (passes at a minimum level of C), and NP (no pass) carry no grade points and are excluded from all grade point computations.
 - 12 The difference between the entering community college GPA in UC transferable courses and the UC GPA. A smaller differential indicates that the school's instructional and grading policies are good predictors of performance at UC.
 - 13 Academic term in which courses were taken
 - 14 Remedial courses in English (Subject A) and mathematics (algebra, geometry, and trigonometry) are provided for UC students who are deficient in their academic preparation and need corrective assistance in order to meet the standards required in University coursework. The University grants neither academic nor workload credit for these remedial courses. Transfer students are not required to enroll in Subject A if they: (1) achieve a C grade or better in an acceptable transfer-level writing course at a community college campus or another institution; (2) satisfactorily pass a University of California Subject A course during the summer session before enrolling; (3) achieve a score of three or higher on the Advanced Placement English test; (4) achieve a score of 600 or higher on the College Board English Composition Test (ECT); or a pass for credit grade on the California State University English Equivalency Examination; (5) satisfactorily pass a diagnostic placement essay examination administered by the campus Subject A department; or writing program.
- While all transfer students are evaluated on writing skills, only those students enrolling in mathematics courses are evaluated in mathematics skills. Determination of the need for remedial mathematics course work varies by individual University campus and/or major. All University campuses use the Mathematics Diagnostic Program for determining a grade point average.



References

- California Postsecondary Education Commission. *Access in a Broader Context: College-Going Rates in California*. Commission Report 78-14. Sacramento: The Commission, October 1978.
- . *College-Going Rates in California: Fall 1978 Update*. Commission Agenda Item, September 16, 1979.
- . *College-Going Rates in California: 1979 Update*. Commission Report 81-3. Sacramento: The Commission, January 1981.
- . *California College-Going Rates and Community College Transfers, 1980*. Commission Report 82-2. Sacramento: The Commission, January 1982.
- . *Update of Community College Transfer Student Statistics, June 1982*. Commission Report 82-24. Sacramento: The Commission, June 1982.
- . *Update of Community College Transfer Student Statistics, Fall 1982*. Commission Report 83-31. Sacramento: The Commission, March 1983.
- . *Update of Community College Transfer Student Statistics, Fall 1983*. Commission Report 84-10. Sacramento: The Commission, March 1984.
- . *Views from the Field on Community College Transfer: Testimony to the Ad Hoc Committee on Community College Transfer, California Postsecondary Education Commission*. Commission Report 84-20. Sacramento: The Commission, June 1984.
- . *Reaffirming California's Commitment to Transfer*. Commission Report 85-15. Sacramento: The Commission, March 1985.
- . *Update of Community College Transfer Student Statistics, Fall 1984*. Commission Report 85-21. Sacramento: The Commission, March 1985.
- . *Update of Community College Transfer Student Statistics, Fall 1985*. Commission Report 86-11. Sacramento: The Commission, March 1986.
- . *Transfer, Articulation, and Collaboration Twenty-Five Years Later: A Result of Relationships Between Two- and Four-Year Institutions*. Commission Agenda Item 10, April 27, 1987.
- . *Update of Community College Transfer Student Statistics, Fall 1986*. Commission Report 87-22. Sacramento: The Commission, April 1987.
- . *Improving Student Performance Reporting: Review and Epilogue. The Final Report of the Commission's Project on Transforming Student Academic Performance Data into Useful Information*. Commission Report 87-37, September 1987.
- . *Strengthening Transfer and Articulation Policies and Practices in California's Colleges and Universities*. Commission Report 87-41. Sacramento: The Commission, November 1987.
- . *Articulating Career Education Programs from High School through Community College to the Baccalaureate Degree*. Commission Report 87-48. Sacramento: The Commission, December 1987.
- The California State University. *Those Who Stay: Student Continuance in The California State University and Colleges, Phase 1*. Technical Memorandum No. 6. Long Beach: Division of Institutional Research, Office of the Chancellor, The California State University and Colleges, June 1976.
- . *Those Who Stay: Student Continuance in The California State University and Colleges, Phase 2*. Technical Memorandum No. 8. Long Beach: Division of Institutional Research, Office of the Chancellor, The California State University and Colleges, May 1979.
- . *Those Who Stay: Student Continuance in The California State University and Colleges, Phase 3*. Long Beach: Division of Institutional Research, Office of the Chancellor, The California State University and Colleges, July 1981 (an update of the Phase 1 report).
- . *Those Who Stay: Student Continuance in The California State University, Phase 4*. Technical Memorandum No. 10. Long Beach: Division of Institutional Research, Office of the Chancellor, The California State University, May 1983 (an update of the Phase 2 report).

CALIFORNIA POSTSECONDARY EDUCATION COMMISSION

The California Postsecondary Education Commission is a citizen board established in 1974 by the Legislature and Governor to coordinate the efforts of California's colleges and universities and to provide independent, non-partisan policy analysis and recommendations to the Governor and Legislature.

Members of the Commission

The Commission consists of 15 members. Nine represent the general public, with three each appointed for six-year terms by the Governor, the Senate Rules Committee, and the Speaker of the Assembly. The other six represent the major segments of postsecondary education in California.

As of January 1988, the Commissioners representing the general public are:

Mim Ardelson, Los Angeles
C. Thomas Dean, Long Beach, Chairperson
Henry Der, San Francisco
Seymour M. Farber, M.D., San Francisco
Lowell J. Paige, El Macero
Cruz Reynoso, Los Angeles, Vice Chairperson
Sharon N. Skog, Palo Alto
Thomas E. Stank, Los Angeles
Stephen P. Trule, M.D., Modesto

Representatives of the segments are:

Yori Wada, San Francisco; representing the Regents or the University of California

Claudia H. Hampton, Los Angeles; representing the Trustees of the California State University

Borgny Baird, Long Beach; representing the Board of Governors of the California Community Colleges

Harry Wugalter, Thousand Oaks; representing the Chairman of the Council for Private Postsecondary Educational Institutions

Kenneth L. Peters, Tarzana; appointed by the California State Board of Education

James B. Jamieson, San Luis Obispo; representing California's independent colleges and universities

Functions of the Commission

The Commission is charged by the Legislature and Governor to "assure the effective utilization of public postsecondary education resources, thereby eliminating waste and unnecessary duplication, and to promote diversity, innovation, and responsiveness to student and societal needs."

To this end, the Commission conducts independent reviews of matters affecting the 2,600 institutions of postsecondary education in California, including Community Colleges, four-year colleges, universities, and professional and occupational schools.

As an advisory planning and coordinating body, the Commission does not administer or govern and institutions, nor does it approve, authorize, or accredit any of them. Instead, it cooperates with other state agencies and non-governmental groups that perform these functions, while operating as an independent board with its own staff and its own specific duties of evaluation, coordination, and planning.

Operation of the Commission

The Commission holds regular meetings throughout the year at which it debates and takes action on staff studies and takes positions on proposed legislation affecting education beyond the high school in California. By law, the Commission's meetings are open to the public. Requests to address the Commission may be made by writing the Commission in advance or by submitting a request prior to the start of a meeting.

The Commission's day-to-day work is carried out by its staff in Sacramento, under the guidance of its executive director, William H. Pickens, who is appointed by the Commission.

The Commission publishes and distributes without charge some 40 to 50 reports each year on major issues confronting California postsecondary education. Recent reports are listed on the back cover.

Further information about the Commission, its meetings, its staff, and its publications may be obtained from the Commission offices at 1020 Twelfth Street, Third Floor, Sacramento, CA 95814; telephone (916) 445-7933.

UPDATE OF COMMUNITY COLLEGE TRANSFER

STUDENT STATISTICS FALL 1987

California Postsecondary Education Commission 88-15

ONE of a series of reports published by the Commission as part of its planning and coordinating responsibilities. Additional copies may be obtained without charge from the Publications Office, California Postsecondary Education Commission, Third Floor, 1020 Twelfth Street, Sacramento, California 95814-3985.

Recent reports of the Commission include:

88-6 Comments on Educational Equity Plans of the Segments: A Staff Report on the Development of Plans by the State Department of Education, the California State University, and the University of California to Achieve the Educational Equity Goals of Assembly Concurrent Resolution 83 (1984) (February 1988)

88-7 Size, Growth, and Cost of Administration at the California State University: A Report Prepared by Price Waterhouse and MGT Consultants for the California Postsecondary Education Commission (February 1988)

88-8 Overview of the 1988-89 Governor's Budget for Postsecondary Education in California: Testimony by William H. Pickens, Executive Director, California Postsecondary Education Commission (March 1988)

88-9 Faculty Salaries in California's Public Universities, 1988-89: The Commission's 1987 Report to the Legislature and Governor in Response to Senate Concurrent Resolution No. 51 (1965) (March 1988)

88-10 Eligibility of California's 1986 High School Graduates for Admission to Its Public Universities: A Report of the 1986 High School Eligibility Study (March 1988)

88-11 Eligibility for Freshman Admission to the University of California: A Statement to the Regents of the University by William H. Pickens, Executive Director, California Postsecondary Education Commission, February 18, 1988 (March 1988)

88-12 Time to Degree in California's Public Universities: Factors Contributing to the Length of Time Undergraduates Take to Earn Their Bachelor's Degree (March 1988)

88-13 Evaluation of the California Academic Partnership Program (CAPP): A Report to the Legislature in Response to Assembly Bill 2398 (Chapter 620, Statutes of 1984) (March 1988)

88-14 Standardized Tests Used for Higher Education Admission and Placement in California During 1987: The Third in a series of Annual Reports Published in Accordance with Senate Bill 1758 (Chapter 1505, Statutes of 1984) (March 1988)

88-15 Update of Community College Transfer Student Statistics Fall 1987: University of California, The California State University, and California's Independent Colleges and Universities (March 1988)

88-16 Legislative Update, March 1988: A Staff Report to the California Postsecondary Education Commission (March 1988)

88-17 State Policy for Faculty Development in California Public Higher Education: A Report to the Governor and Legislature in Response to Supplemental Language in the 1986 Budget Act (May 1988)

88-18 to 20 Exploring Faculty Development in California Higher Education: Prepared for the California Postsecondary Education Commission by Berman, Weiler Associates:

88-18 Volume One: Executive Summary and Conclusions, by Paul Berman and Daniel Weiler, December 1987 (March 1988)

88-19 Volume Two: Findings, by Paul Berman, Jo Ann Intili and Daniel Weiler, December 1987 (March 1988)

88-20 Volume Three: Appendix, by Paul Berman, Jo Ann Intili and Daniel Weiler, January 1988 (March 1988)

88-21 Staff Development in California's Public Schools: Recommendations of the Policy Development Committee for the California Staff Development Policy Study, March 16, 1988 (March 1988)

88-22 and 23 Staff Development in California: Public and Personal Investments, Program Patterns, and Policy Choices, by Judith Warren Little, William H. Gerritz, David S. Stern, James W. Guthrie, Michael W. Kirst, and David D. Marsh. A Joint Publication of Far West Laboratory for Educational Research and Development - Policy Analysis for California Education (PACE), December 1987:

88-22 Executive Summary (March 1988)

88-23 Report (March 1988)

ERIC Clearinghouse for
Junior Colleges AUG 05 1988